

MUSKOX

PARTS MANUAL

MODELS 24-78 AND 24-90



601 First Street North | Mentor, MN 56736
PH: 218.288.1905 | WEB: www.muskoxmn.com

TABLE OF CONTENTS

| | | | |
|-----------------------------------|-------|--|-------|
| PREFACE | 5 | IMPELLER MOTOR HOSE | |
| AUGER MOTOR HOSE | | MODEL 24-78 | 23 |
| MODEL 24-78 | 6 | MODEL 24-90 | 24 |
| MODEL 24-90 | 7 | ELECTRIC HARNESS | 25 |
| CHUTE & IMPELLER MOTOR | | WIRING HARNESS SETUP | 26 |
| MODEL 24-78 | 8-9 | LEFT HAND FLAPPER | 27 |
| MODEL 24-90 | 10-11 | LOADER HOSE ASSEMBLY | 28 |
| LEVEL INDICATOR | 12 | LOADER HOSE BOBCAT ASSEMBLY | 29 |
| BACK DRAG POLES | 13 | LOADER HOSE SINGLE ARM ASSEMBLY | 30 |
| CHUTE DEFLECTOR HOSE | 14 | LOWER AUGER | |
| CHUTE MOTOR | 15 | MODEL 24-78 | 31 |
| CHUTE MOTOR HOSE | 16 | MODEL 24-90 | 32 |
| CUTTING EDGES | | MOUNTING PLATE | 33 |
| MODEL 24-78 | 17 | UPPER AUGER KIT | |
| MODEL 24-90 | 18 | MODEL 24-78 | 34-35 |
| IMPELLER | | MODEL 24-90 | 36-37 |
| MODEL 24-78 | 19 | PLASTIC WEAR GUIDES | |
| MODEL 24-90 | 20 | MODEL 24-78 | 38 |
| IMPELLER MOTOR | | MODEL 24-90 | 39 |
| MODEL 24-78 | 21 | HYDROLIC BLOCK | 40 |
| MODEL 24-90 | 22 | BOLT TORQUE SPECIFICATIONS | 41 |

PREFACE

INTRODUCTION

For your safety and continued proper operation, use only genuine Muskox service parts. When ordering service parts, specify the correct part number, full description, quantity required, and the unit model number and serial number.

The model and serial number plate is located left of the chute on the fan housing (see below).

Muskox reserves the right to make changes or improvements in the design or construction of any part of the unit without incurring the obligation to install such changes on any previously delivered units.

NOTE: The illustrations and data used in this manual were current (according to the information available to us) at the time of printing, however, we reserve the right to redesign and change the attachment as may be necessary without notification.

Standard attaching hardware torque values are provided on the last page of this manual.

Items shown in the parts list that do not have part numbers are shown for reference purposes only and are NOT available for purchase.



For the most updated information on MUSKOX products and services, please visit www.muskoxmn.com/support. There you will find service and maintenance videos, tips, advice and more.

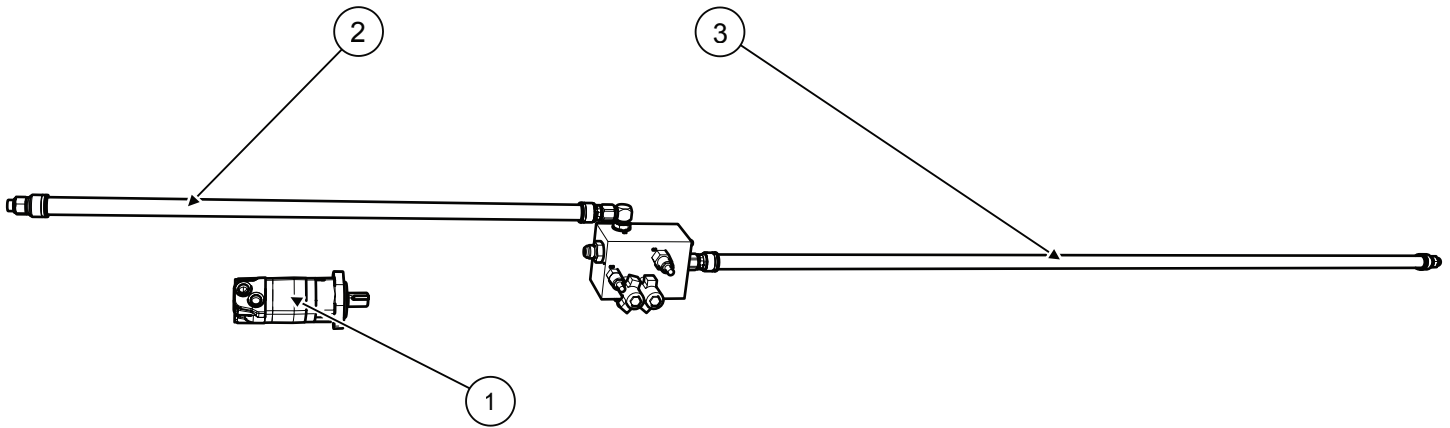
MODEL 24-78 ▼

MODEL 24-90

AUGER MOTOR HOSE

PROPRIETARY AND CONFIDENTIAL

The information contained in this drawing is the sole property of Muskox. Any reproduction in part or as a whole without the written permission of Muskox is prohibited.

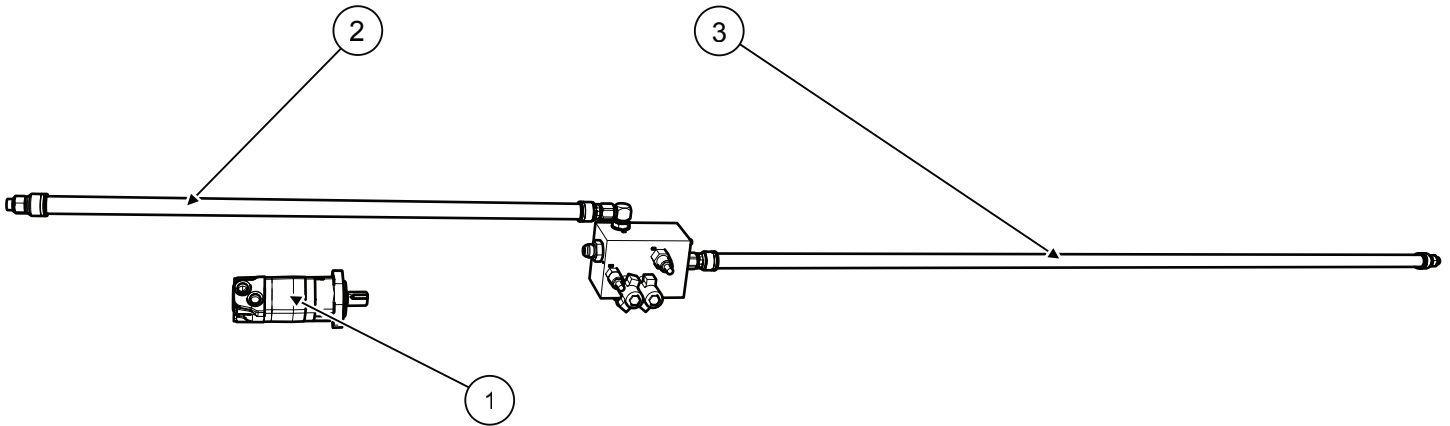


| ITEM # | DESCRIPTION | SKU's | QTY |
|--------|-------------------------|----------|-----|
| 1 | MOTOR,24.0 CIR-AUGER-US | 0809-612 | 1 |
| 2 | HOSE,AUGER-40 1/2"-ASSY | 1809-019 | 1 |
| 3 | HOSE,AUGER-79"-ASSY | 1809-020 | 1 |

AUGER MOTOR HOSE

PROPRIETARY AND CONFIDENTIAL

The information contained in this drawing is the sole property of MuskoX. Any reproduction in part or as a whole without the written permission of MuskoX is prohibited.

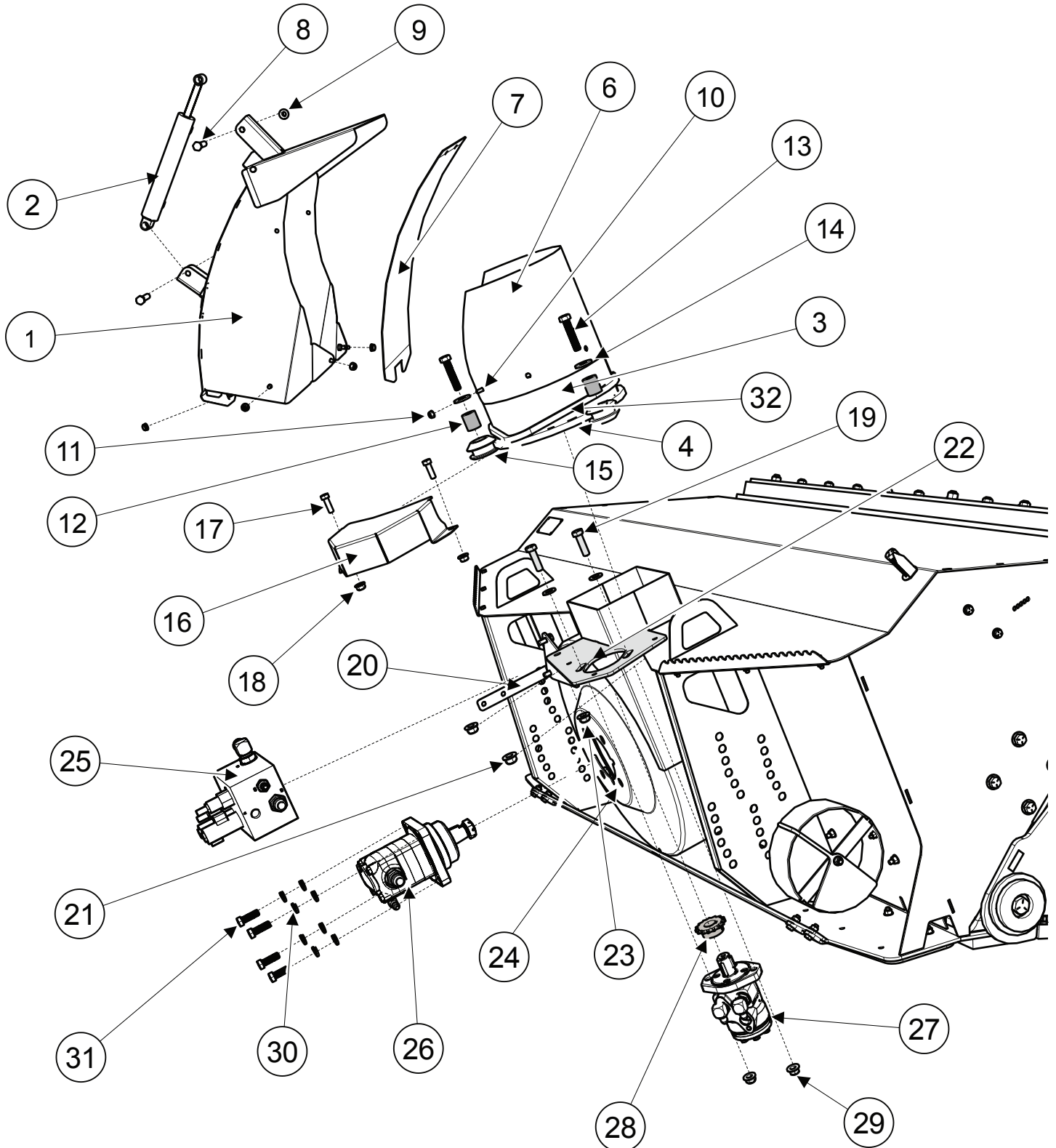


| ITEM # | DESCRIPTION | SKU's | QTY |
|--------|---------------------------|----------|-----|
| 1 | MOTOR,24.0 CIR-AUGER-US | 0809-612 | 1 |
| 2 | HOSE,AUGER-45.5 1/2"-ASSY | 1809-029 | 1 |
| 3 | HOSE,AUGER-84"-ASSY | 1809-030 | 1 |

CHUTE & IMPELLER MOTOR

PROPRIETARY AND CONFIDENTIAL

The information contained in this drawing is the sole property of MuskoX. Any reproduction in part or as a whole without the written permission of MuskoX is prohibited.



MODEL 24-78 ▼

MODEL 24-90

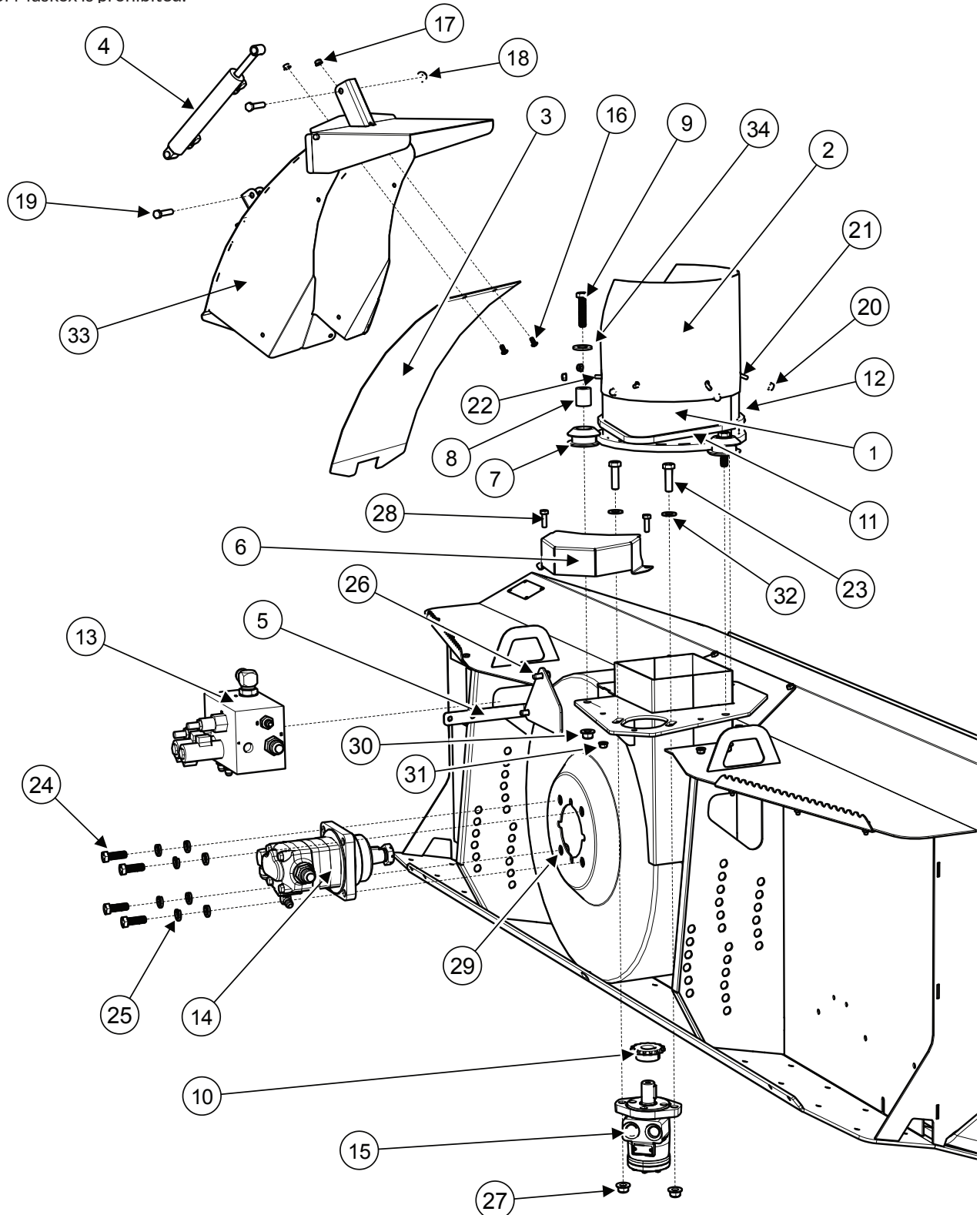
| ITEM # | DESCRIPTION | SKU's | QTY |
|--------|---|-------------|-----|
| 1 | CHUTE-WELDT | 800-0430-R3 | 1 |
| 2 | CYLINDER,10 1/2" 4"STK 1 3/4"-CHUTE | 0809-609 | 1 |
| 3 | RING,CHUTE-ROLLED | 610-0003-R1 | 1 |
| 4 | RING,ROTATION-CHUTE | 610-1516-R2 | 1 |
| 6 | SHROUD,CHUTE-HMW-BLACK | 611-0007 | 1 |
| 7 | GUARD,CHUTE-HMW-BLACK | 611-0005-R1 | 1 |
| 8 | BOLT,HEX-3/8"X1 3/4"-GR5 Z&C | 8002-207 | 2 |
| 9 | NUT,FLG NYL-3/8"-Z&C | 8041-201 | 2 |
| 10 | BOLT,HEX-1/4"X3/4"-GR5 Z&C | 8002-001 | 7 |
| 11 | NUT,FLG NYL-1/4"-Z&C | 8041-001 | 7 |
| 12 | BUSHING,CHUTE ROLLER | 611-0004 | 3 |
| 13 | BOLT,HEX-1/2"X2 1/2"-GR5 Z&C | 8002-310 | 3 |
| 14 | WASHER,FLAT-1/2" X 1 3/8"-USS | 8050-004 | 3 |
| 15 | ROLLER,CHUTE ROTATION-TAPERED | 620-0052-R1 | 3 |
| 16 | GUARD,CHAIN | 610-1531 | 1 |
| 17 | BOLT,HEX-5/16"X1"-GR5 Z&C | 8002-103 | 2 |
| 18 | NUT,FLG NYL-5/16"-Z&C | 8041-101 | 2 |
| 19 | BOLT,HEX-1/2"X1 3/4"-GR5 Z&C | 8002-306 | 2 |
| 20 | BRKT,WIRE SUPPORT | 610-0026 | 1 |
| 21 | NUT,FLG NYL-1/2"-Z&C | 8041-301 | 2 |
| 22 | PLATE,MOTOR MNT-CHUTE | 610-1510-R3 | 1 |
| 23 | NUT,FLG NYL-1/2"-Z&C | 8041-301 | 1 |
| 24 | NUT,WELD-.5"-13-WITH PROJECTIONS | 8042-001 | 4 |
| 25 | BLOCK,CONTROL-VALVE | 0809-614 | 1 |
| 26 | MOTOR, 4.9 CIR-IMPELLER-US (20" Fan)* | 0809-610 | 1 |
| 26 | MOTOR, 6.2 CIR-IMPELLER-US (20" Fan)* | 0809-604 | 1 |
| 26 | MOTOR, 8.0 CIR-IMPELLER-US (20" Fan)* | 0809-606 | 1 |
| 26 | MOTOR, 9.6 CIR-IMPELLER-US (24" Fan)* | 0809-611 | 1 |
| 26 | MOTOR, 11.9 CIR-IMPELLER-US (24" Fan)* | 0809-616 | 1 |
| 26 | MOTOR, 14.9 CIR-IMPELLER-US (24" Fan)* | 0809-617 | 1 |
| 27 | MOTOR, 2.8 CIR-CHUTE-US | 0809-601 | 1 |
| 28 | SPROCKET,15T 1" BORE 40P | 430-0003 | 1 |
| 29 | NUT,FLG NYL-1/2"-Z&C | 8041-301 | 2 |
| 30 | WASHER,LOCK-1/2"-Z&C | 8050-001 | 8 |
| 31 | BOLT,HEX-1/2"x1 1/2"-GR5 Z&C | 8002-305 | 4 |
| 32 | CHAIN,CHUTE ROTATE-69 LINK-#40 STAINLESS ROLLER | 620-0024 | 1 |

*CONTACT MUSKOX FOR PARTS SPECIFIC TO YOUR UNIT

CHUTE & IMPELLER MOTOR

PROPRIETARY AND CONFIDENTIAL

The information contained in this drawing is the sole property of Muskox. Any reproduction in part or as a whole without the written permission of Muskox is prohibited.



MODEL 24-78

MODEL 24-90 ▼

| ITEM # | DESCRIPTION | SKU's | QTY |
|--------|--|-------------|-----|
| 1 | CHUTE,ROTATION-WELDT | 800-0432-R2 | 1 |
| 2 | SHROUD,CHUTE-HMW-BLACK | 611-0007 | 1 |
| 3 | GUARD,CHUTE-HMW-BLACK | 611-0005-R1 | 1 |
| 4 | CYLINDER,10 1/2" 4"STK 1 3/4"-CHUTE | 0809-609 | 1 |
| 5 | BRKT,WIRE SUPPORT | 610-0026 | 1 |
| 6 | GUARD,CHAIN | 610-1531 | 1 |
| 7 | ROLLER,CHUTE ROTATION-TAPERED | 620-0052-R1 | 3 |
| 8 | BUSHING,CHUTE ROLLER | 611-0004 | 3 |
| 9 | 1_2 x 2 1_4 Medium-Strength Grade 5 Steel Hex Head Screw | 8002-308 | 3 |
| 10 | SPROCKET,15T 1" BORE 40P | 430-0003 | 1 |
| 11 | CHAIN,CHUTE ROTATE-69 LINK-#40 STAINLESS ROLLER | 620-0024 | 1 |
| 12 | CONNECTOR,CHAIN-CHUTE ROTATION | 610-0017 | 1 |
| 13 | BLOCK,CONTROL-VALVE ASSY | 0809-608 | 1 |
| 14 | MOTOR, 11.9 CIR-IMPELLER-US* | 0809-616 | 1 |
| 14 | MOTOR, 14.9 CIR-IMPELLER-US* | 0809-617 | 1 |
| 15 | MOTOR,2.8 CIR-CHUTE-US | 0809-613 | 1 |
| 16 | SCREW,MACH-PH 1/4"X1/2"-PHILLIPS | 8003-010 | 2 |
| 17 | NUT,FLG NYL-1/4"-Z&C | 8041-001 | 2 |
| 18 | NUT,FLG NYL-3/8"-Z&C | 8041-201 | 2 |
| 19 | BOLT,HEX-3/8"X1 3/4"-GR5 Z&C | 8002-207 | 2 |
| 20 | NUT,FLG NYL-1/4"-Z&C | 8041-001 | 7 |
| 21 | BOLT,HEX-1/4"X3/4"-GR5 Z&C | 8002-001 | 5 |
| 22 | BOLT,HEX-1/4"X3/4"-GR5 Z&C | 8002-001 | 2 |
| 23 | BOLT,HEX-1/2"X1 3/4"-GR5 Z&C | 8002-306 | 2 |
| 24 | BOLT,HEX-1/2"x1 1/2"-GR5 Z&C | 8002-305 | 4 |
| 25 | WASHER,LOCK-1/2"-Z&C | 8050-001 | 8 |
| 26 | BOLT,HEX-3/8"X1"-GR5 Z&C | 8002-202 | 2 |
| 27 | NUT,FLG NYL-1/2"-Z&C | 8041-301 | 2 |
| 28 | BOLT,HEX-5/16"X1"-GR5 Z&C | 8002-103 | 2 |
| 29 | NUT,WELD-.5"-13-WITH PROJECTIONS | 8042-001 | 4 |
| 30 | NUT,FLG NYL-1/2"-Z&C | 8041-301 | 2 |
| 31 | NUT,FLG NYL-5/16"-Z&C | 8041-101 | 2 |
| 32 | WASHER,FLAT-1/2"-Z&C | 8050-301 | 2 |
| 33 | CHUTE-WELDT | 800-0430-R3 | 1 |
| 34 | WASHER,FLAT-1/2" X 1 3/8"-USS | 8050-004 | 3 |

*CONTACT MUSKOX FOR IMPELLER MOTOR SPECIFIC TO YOUR UNIT

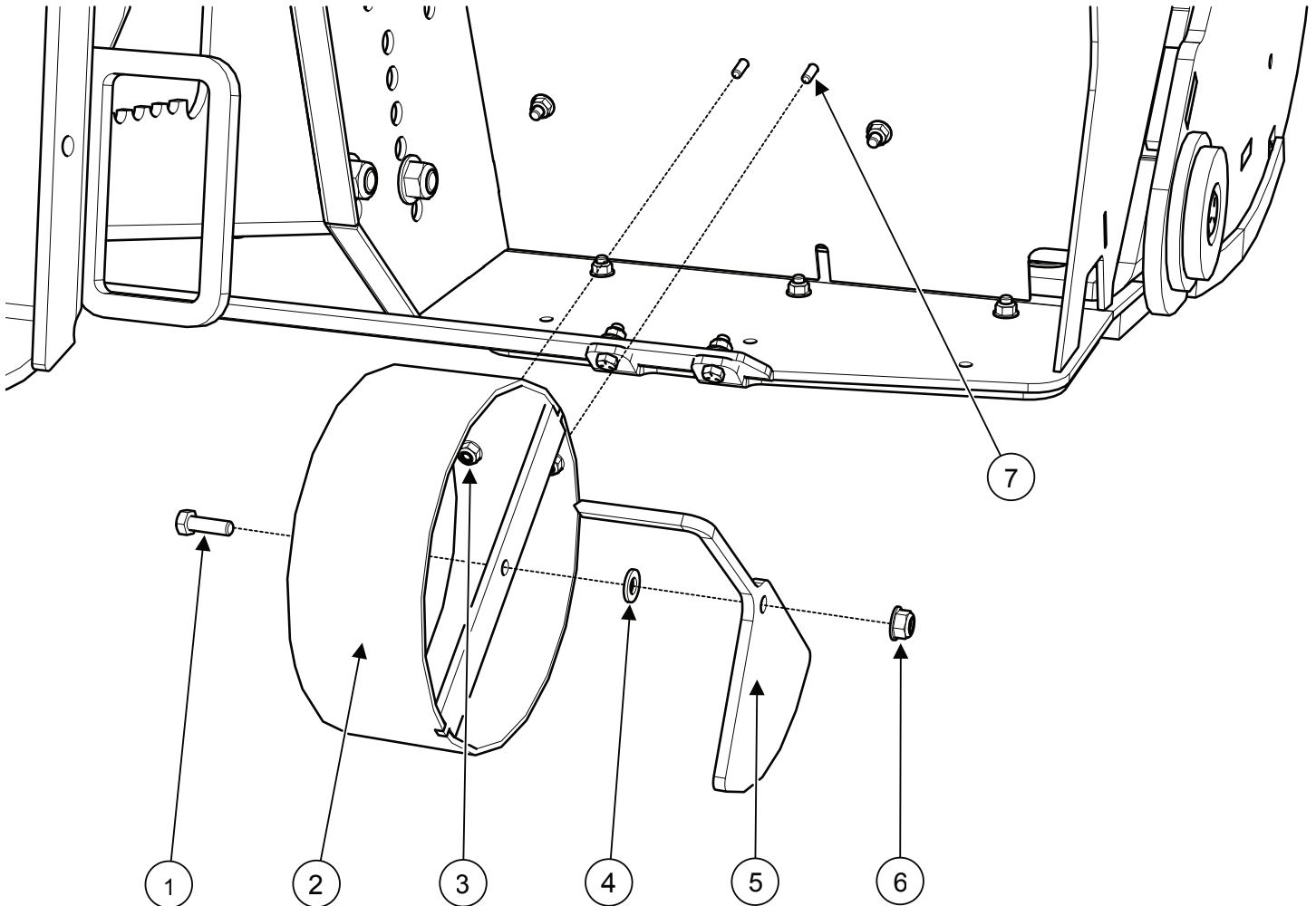
MODEL 24-78 ▼

MODEL 24-90 ▼

LEVEL INDICATOR

PROPRIETARY AND CONFIDENTIAL

The information contained in this drawing is the sole property of MuskoX. Any reproduction in part or as a whole without the written permission of MuskoX is prohibited.



| ITEM # | DESCRIPTION | SKU's | QTY |
|--------|------------------------------|-------------|-----|
| 1 | BOLT,HEX-5/16"X1"-GR5 Z&C | 8002-103 | 1 |
| 2 | HOUSING,LEVEL GAUGE-WELDT | 800-0008-R2 | 1 |
| 3 | NUT,FLG NYL-1/4"-Z&C | 8041-001 | 2 |
| 4 | WASHER,FLAT-5/16"X11/16"-Z&C | 8050-100 | 1 |
| 5 | INDICATOR,LEVEL GAUGE | 610-0029-R2 | 1 |
| 6 | NUT,FLG NYL-5/16"-Z&C | 8041-101 | 1 |
| 7 | BOLT,HEX-1/4"X3/4"-GR5 Z&C | 8002-001 | 2 |

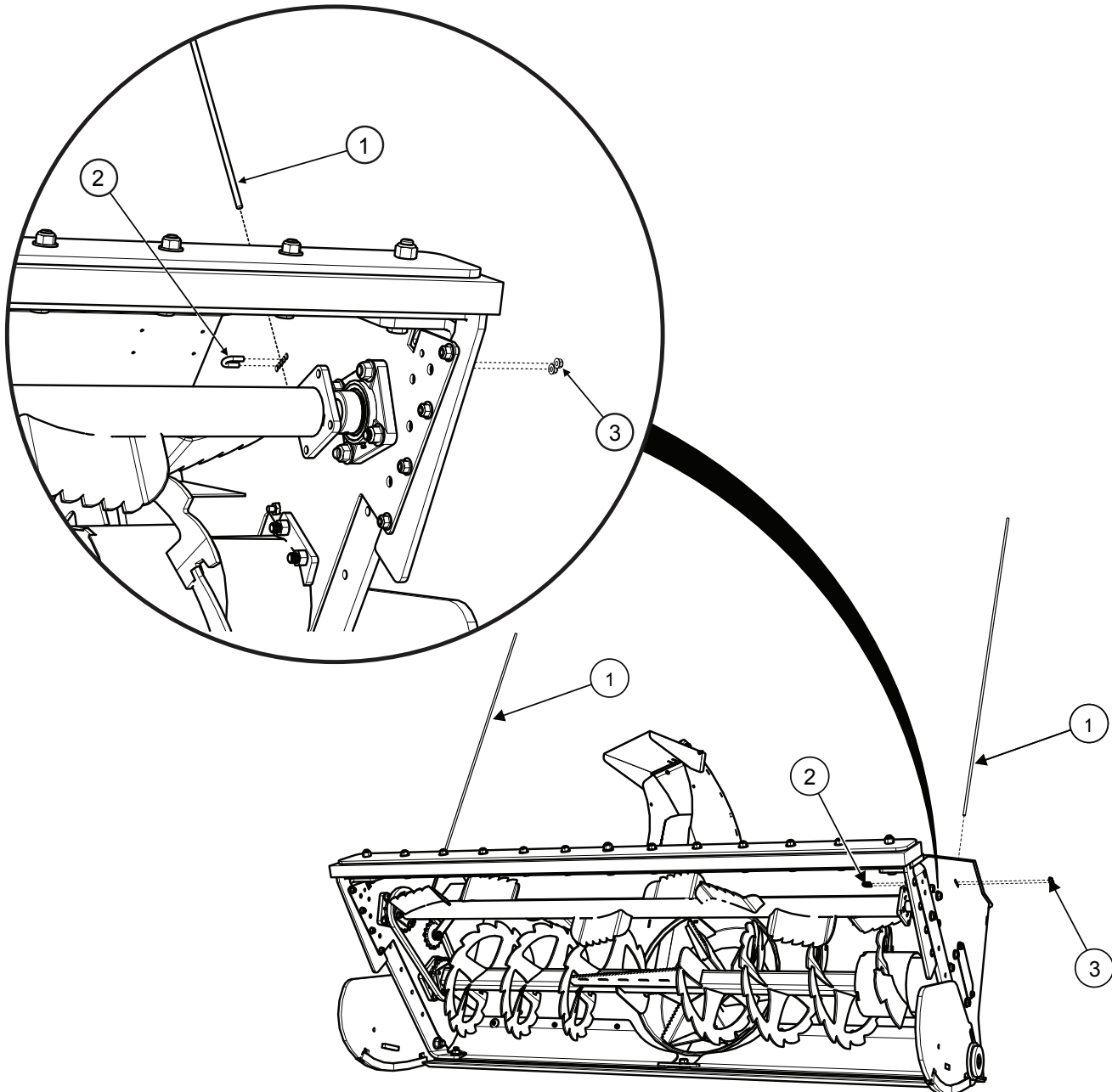
MODEL 24-78 ▼

MODEL 24-90 ▼

BACK DRAG POLES

PROPRIETARY AND CONFIDENTIAL

The information contained in this drawing is the sole property of MuskoX. Any reproduction in part or as a whole without the written permission of MuskoX is prohibited.



| ITEM # | DESCRIPTION | SKU's | QTY |
|--------|----------------------|----------|-----|
| 1 | GUIDE POLE | 611-0101 | 2 |
| 2 | CLAMP, GUIDE POLE | 8044-005 | 2 |
| 3 | NUT,FLG NYL-1/4"-Z&C | 8041-001 | 4 |

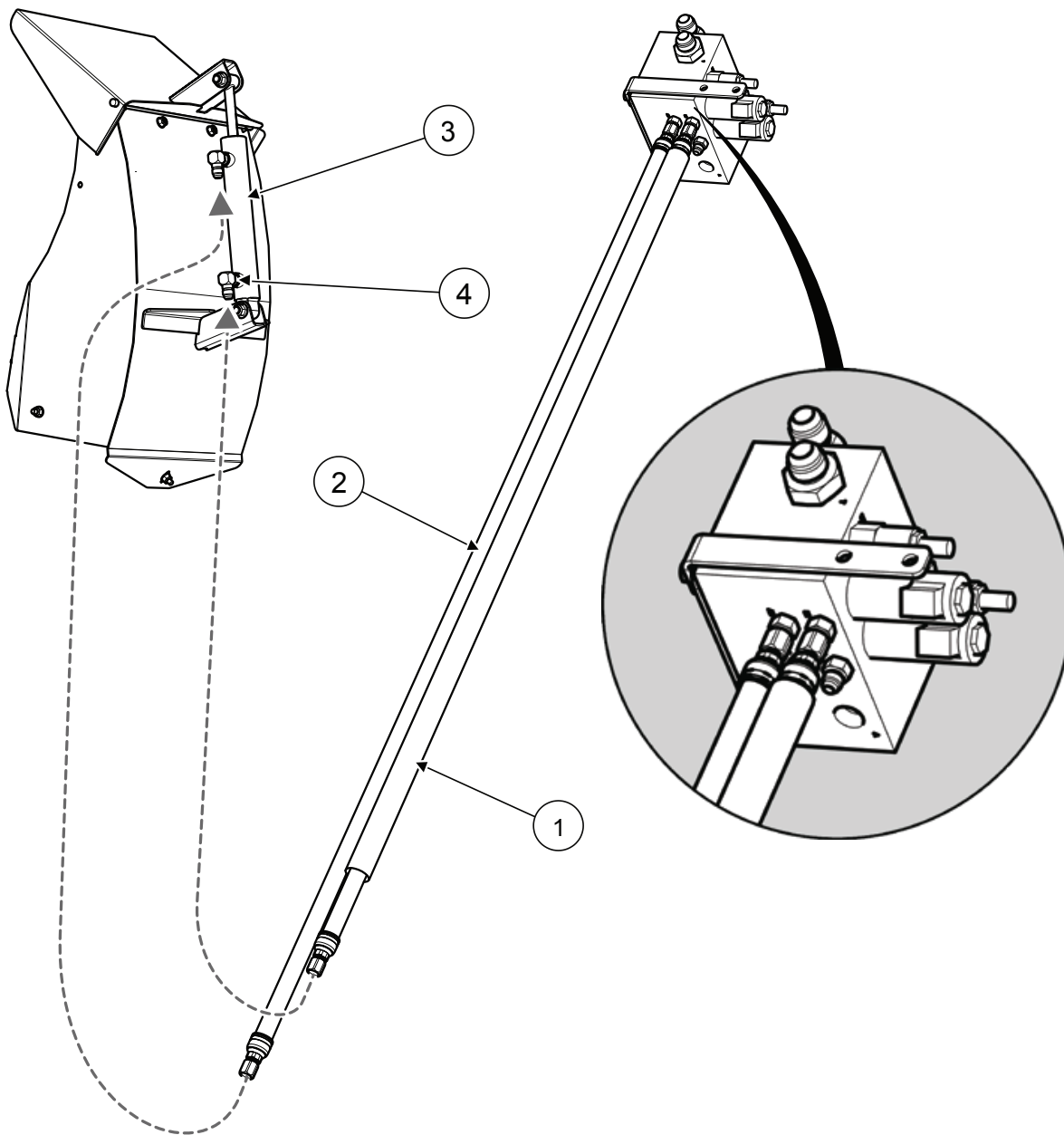
MODEL 24-78 ▼

MODEL 24-90 ▼

CHUTE DEFLECTOR HOSE

PROPRIETARY AND CONFIDENTIAL

The information contained in this drawing is the sole property of Muskox. Any reproduction in part or as a whole without the written permission of Muskox is prohibited.



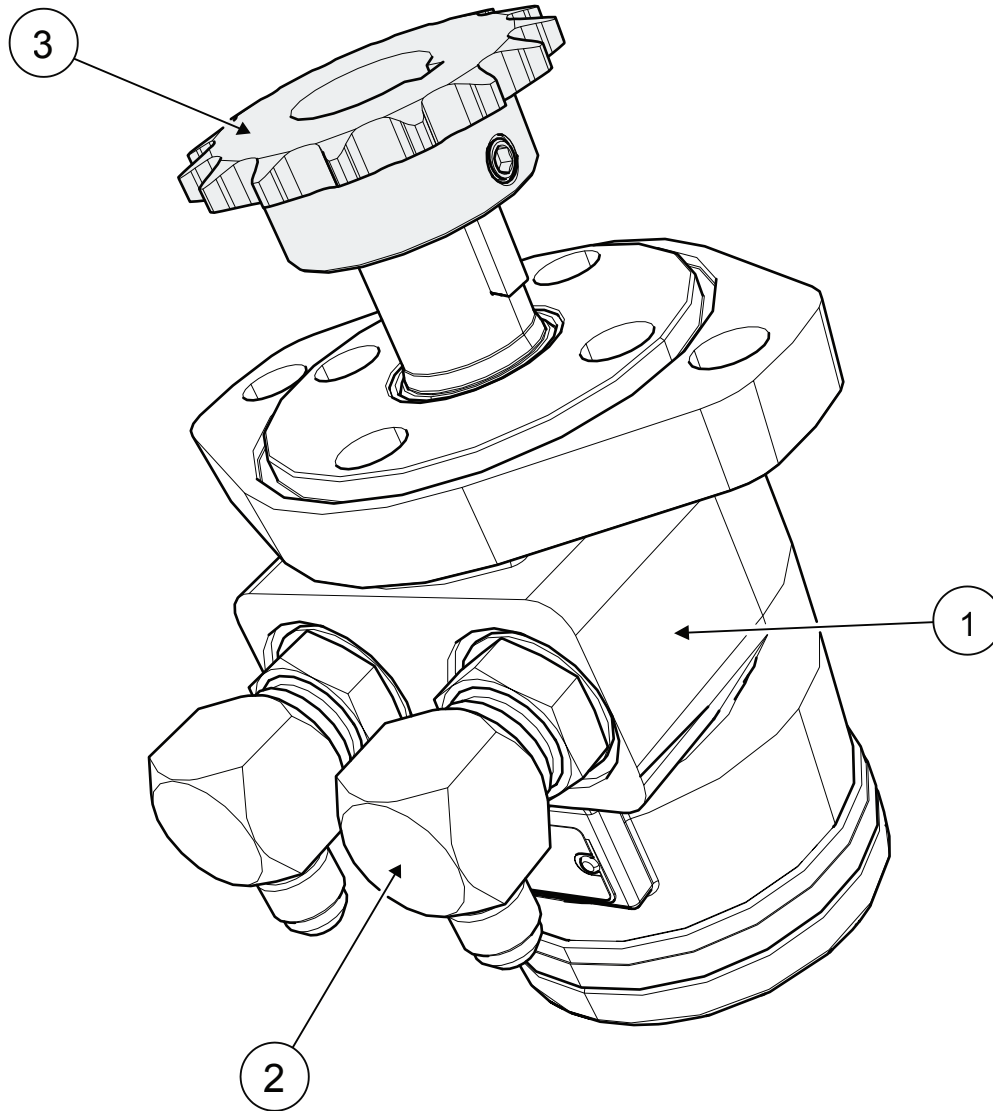
| ITEM # | DESCRIPTION | SKU's | QTY |
|--------|-------------------------------------|----------|-----|
| 1 | HOSE,DEFLECTOR-53"-ASSY | 0809-036 | 1 |
| 2 | HOSE,DEFLECTOR-59"-ASSY | 0809-037 | 1 |
| 3 | CYLINDER,10 1/2" 4"STK 1 3/4"-CHUTE | 0809-609 | 1 |
| 4 | FITTING,6MJ-4MORB-90 DEG | 0809-715 | 2 |

MODEL 24-78 ▼**MODEL 24-90 ▼**

CHUTE MOTOR

PROPRIETARY AND CONFIDENTIAL

The information contained in this drawing is the sole property of Muskox. Any reproduction in part or as a whole without the written permission of Muskox is prohibited.



| ITEM # | DESCRIPTION | SKU's | QTY |
|--------|---------------------------|----------|-----|
| 1 | MOTOR,2.8 CIR-CHUTE-US | 0809-613 | 1 |
| 2 | FITTING,6MJ-10MORB-90 DEG | 0809-718 | 2 |
| 3 | SPROCKET,15T 1" BORE 40P | 430-0003 | 1 |

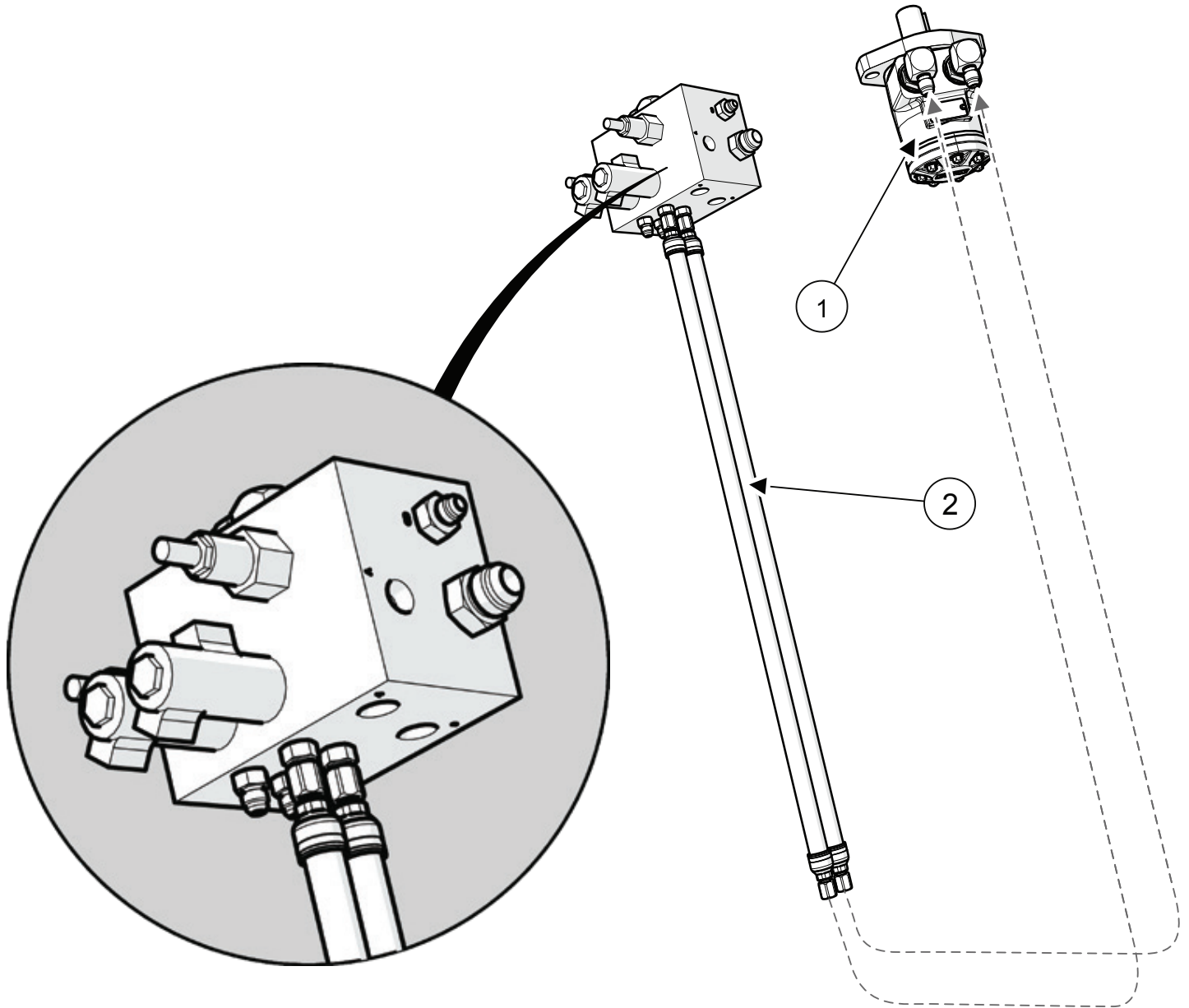
MODEL 24-78 ▼

MODEL 24-90 ▼

CHUTE MOTOR HOSE

PROPRIETARY AND CONFIDENTIAL

The information contained in this drawing is the sole property of Muskox. Any reproduction in part or as a whole without the written permission of Muskox is prohibited.

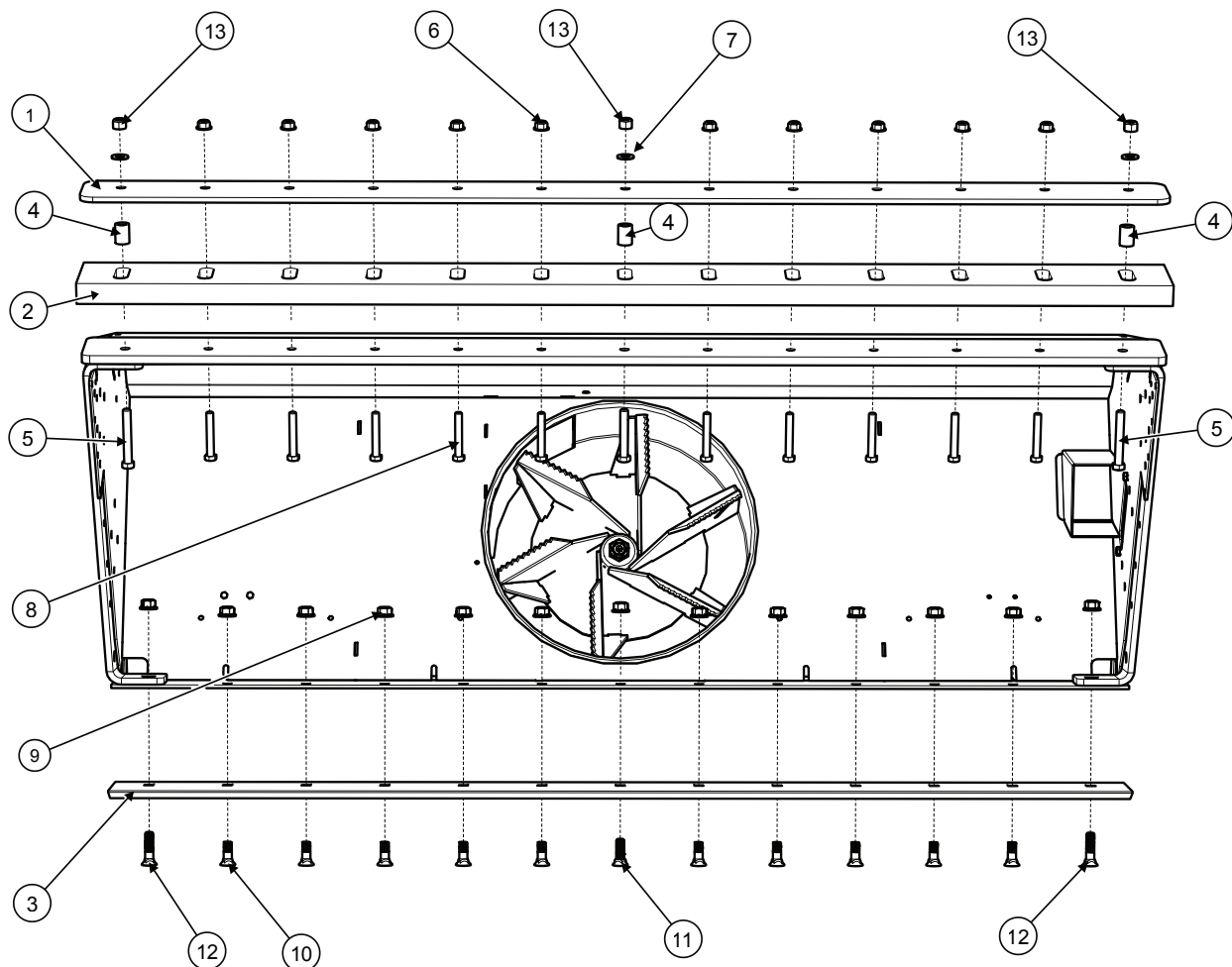


| ITEM # | DESCRIPTION | SKU's | QTY |
|--------|------------------------|----------|-----|
| 1 | MOTOR,2.8 CIR-CHUTE-US | 0809-613 | 1 |
| 2 | HOSE,ROTATE-31"-ASSY | 0809-035 | 2 |

CUTTING EDGES

PROPRIETARY AND CONFIDENTIAL

The information contained in this drawing is the sole property of MuskoX. Any reproduction in part or as a whole without the written permission of MuskoX is prohibited.

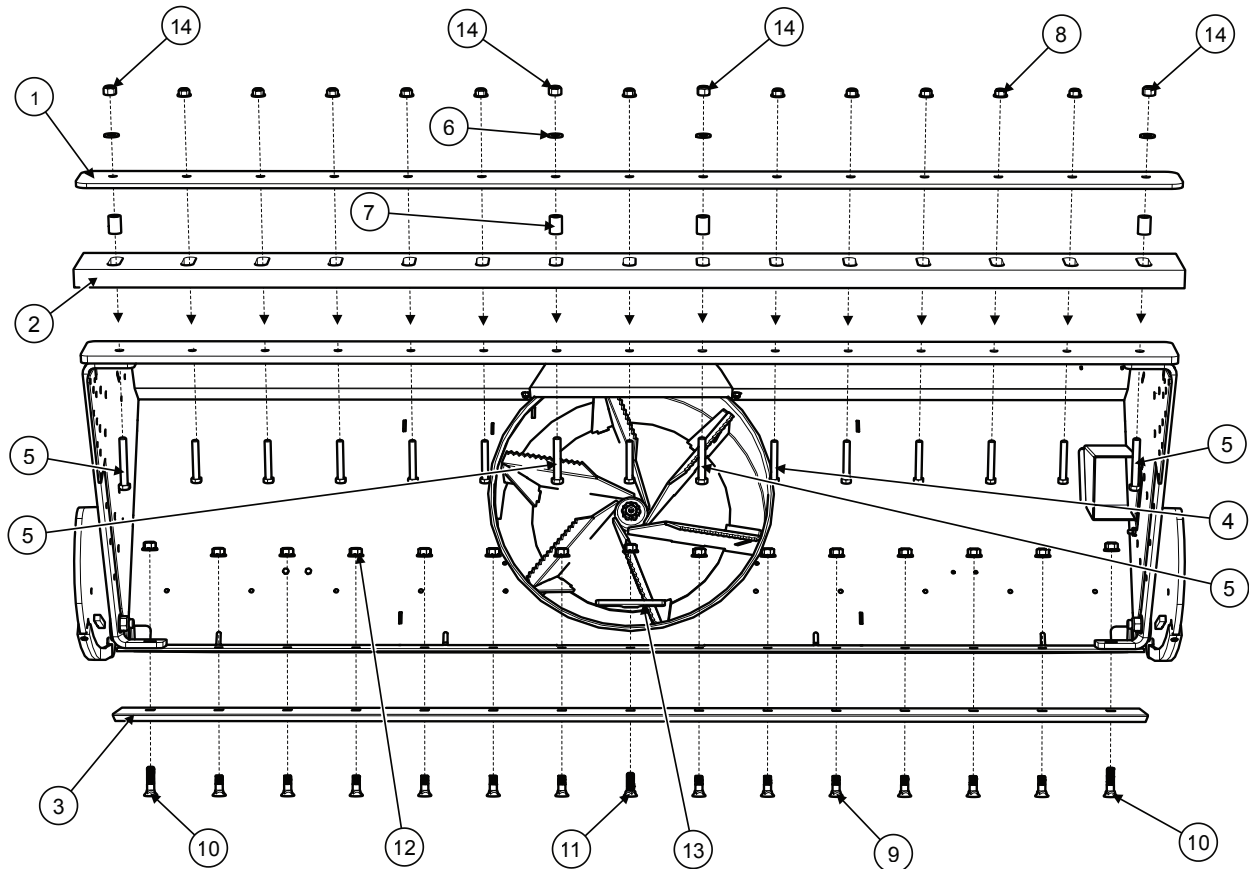


| ITEM # | DESCRIPTION | SKU's | QTY |
|--------|---|-------------|-----|
| 1 | PLATE,MTG-RUBBER CUT EDGE-78" | 610-1549 | 1 |
| 2 | SCRAPING EDGE, RUBBER-60 DURO-1 1/2"X6"X78" | 611-0006 | 1 |
| 3 | CUTTING EDGE, 77.5" | 620-0061-R1 | 1 |
| 4 | BUSHING,RUBBER CUT EDGE | 620-0057 | 3 |
| 5 | BOLT,HEX-9/16"X4"-GR5 Z&C | 8002-375 | 2 |
| 6 | NUT,FLG NYL-1/2"-Z&C | 8041-301 | 10 |
| 7 | WASHER,FLAT-9/16"-Z&C | 8050-550 | 3 |
| 8 | BOLT,HEX-1/2"X3 1/4"-FULL-GR5 Z&C | 8002-314 | 11 |
| 9 | NUT, HEAVY HEX-5/8"-Z&C | 8041-513 | 13 |
| 10 | BOLT, PLOW-5/8"X1 3/4"-GR5 PLAIN | 8004-301 | 10 |
| 11 | BOLT, PLOW-5/8"X2"-GR5 PLAIN | 8003-303 | 1 |
| 12 | BOLT, PLOW-5/8"X2 1/4"-GR5 PLAIN | 8004-000 | 2 |
| 13 | NUT,HEX NYL-9/16"-Z&C | 8043-001 | 3 |

CUTTING EDGES

PROPRIETARY AND CONFIDENTIAL

The information contained in this drawing is the sole property of Muskox. Any reproduction in part or as a whole without the written permission of Muskox is prohibited.

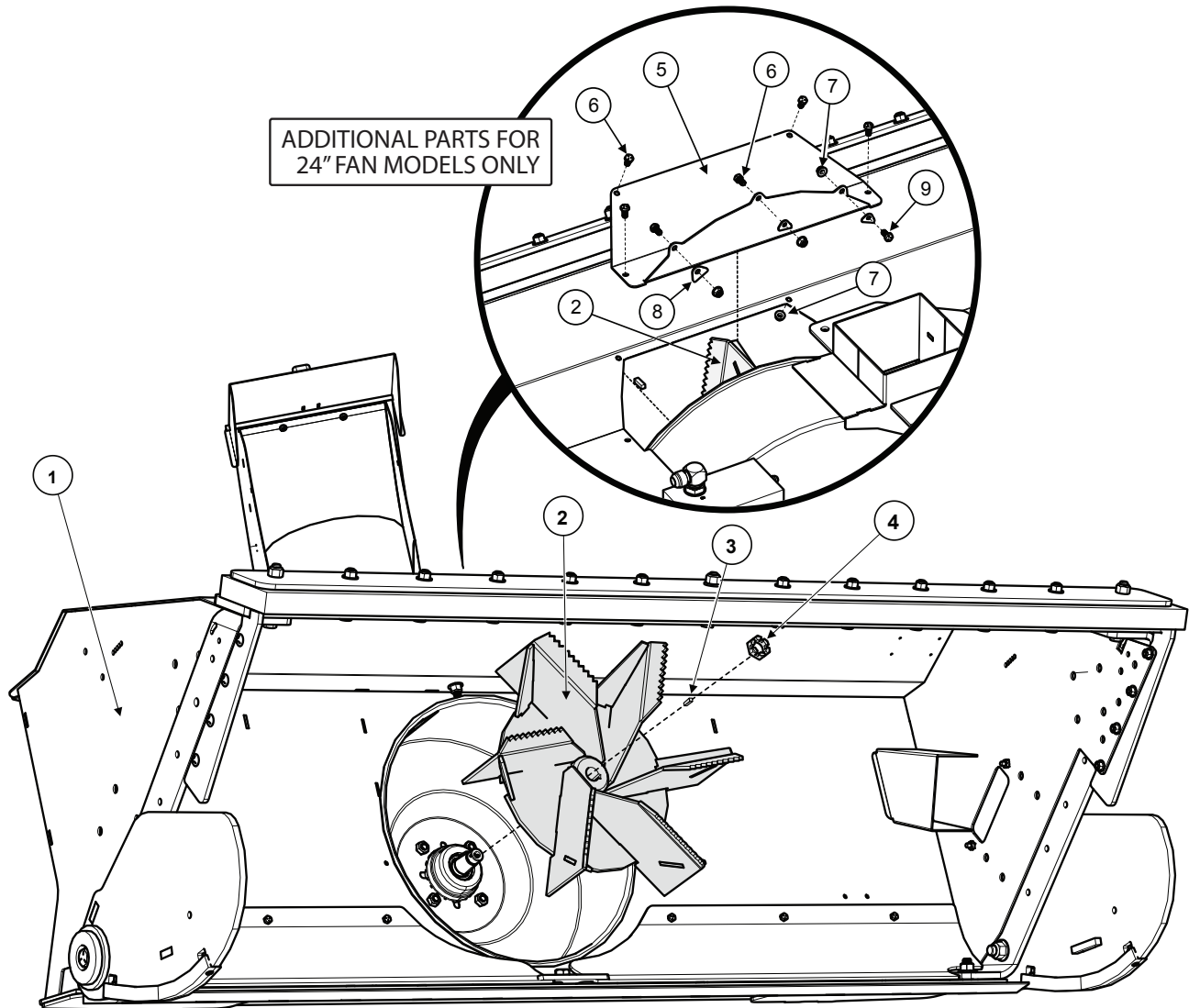


| ITEM # | DESCRIPTION | SKU's | QTY |
|--------|-----------------------------------|-------------|-----|
| 1 | PLATE,MTG-RUBBER CUT EDGE-90" | 610-1578 | 1 |
| 2 | 90" RUBBER CUT EDGE | 611-0012 | 1 |
| 3 | CUTTING EDGE, 89.5" | 620-0060-R1 | 1 |
| 4 | BOLT,HEX-1/2"X3 1/4"-FULL-GR5 Z&C | 8002-314 | 11 |
| 5 | BOLT,HEX-9/16"X4"-GR5 Z&C | 8002-375 | 4 |
| 6 | WASHER,FLAT-9/16"-Z&C | 8050-550 | 4 |
| 7 | BUSHING,RUBBER CUT EDGE | 620-0057 | 4 |
| 8 | NUT,FLG NYL-1/2"-Z&C | 8041-301 | 11 |
| 9 | BOLT, PLOW-5/8"X1 3/4"-GR5 PLAIN | 8004-301 | 12 |
| 10 | BOLT, PLOW-5/8"X2 1/4"-GR5 PLAIN | 8004-000 | 2 |
| 11 | BOLT, PLOW-5/8"X2"-GR5 PLAIN | 8003-303 | 1 |
| 12 | NUT, HEAVY HEX-5/8"-PLAIN | 8041-513 | 15 |
| 13 | T BRKT-HMW HOLD DOWN | 610-1554-R2 | 1 |
| 14 | NUT,HEX NYL-9/16"-Z&C | 8043-001 | 4 |

IMPELLER

PROPRIETARY AND CONFIDENTIAL

The information contained in this drawing is the sole property of Muskox. Any reproduction in part or as a whole without the written permission of Muskox is prohibited.

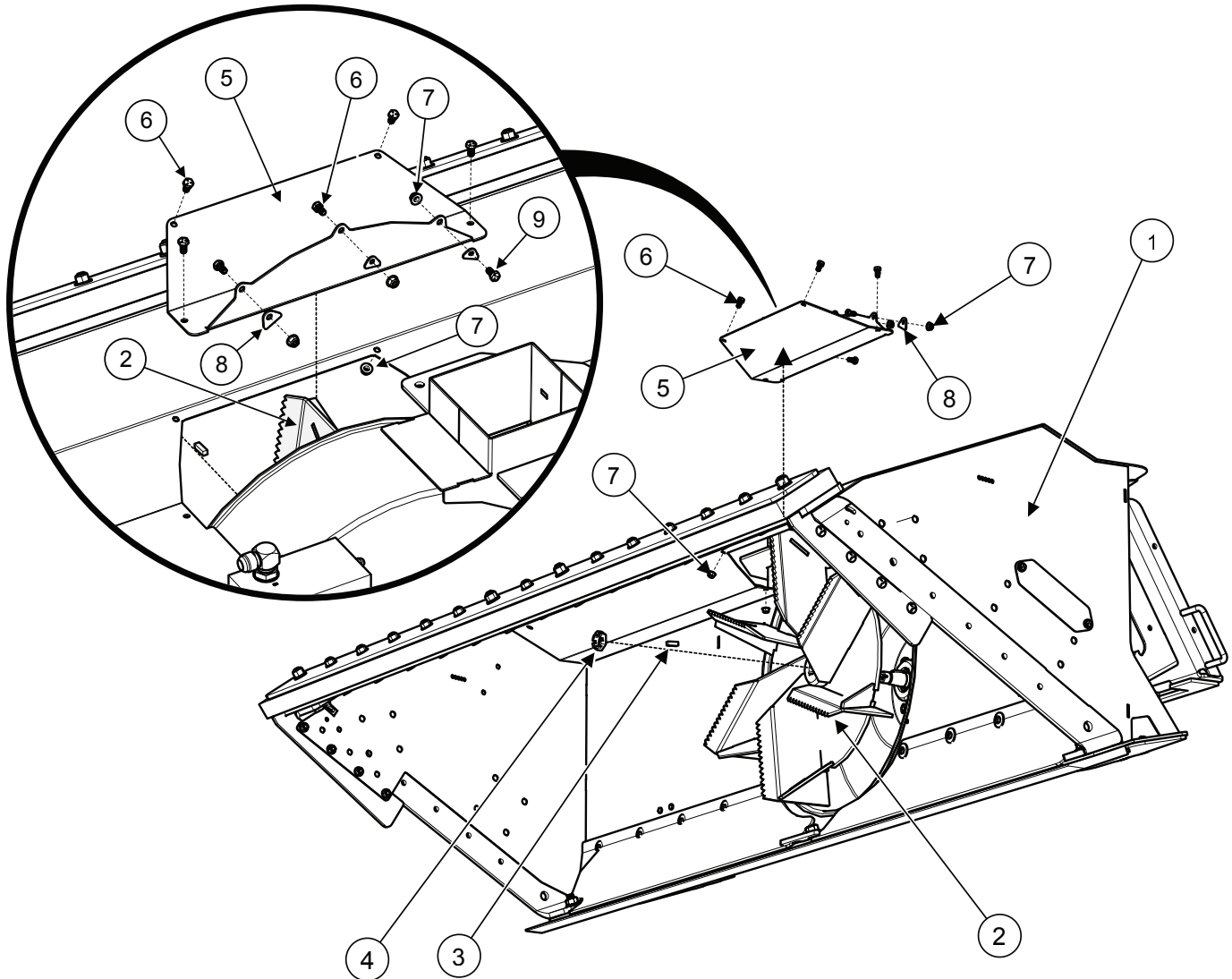


| ITEM # | DESCRIPTION | SKU's | QTY |
|--------|---|-------------|-----|
| 1 | BLOWER MAIN-78" WELDT* (20" Fan) | 800-0424-R6 | 1 |
| 1 | BLOWER MAIN-78" LARGE FAN WELDMENT* (24" Fan) | 800-0431 | 1 |
| 2 | IMPELLER-TANGENT-WELDT* (20" Fan) | 800-0006 | 1 |
| 2 | IMPELLER 24" WELDMENT* (24" Fan) | 800-0442 | 1 |
| 3 | Key Stock - 5/16"X5/16"X1" | 8044-001 | 1 |
| 4 | "1" Slotted Nut | 8041-002 | 1 |
| 5 | COVER, 24" BLOWER (24" Fan) | 610-1590 | 1 |
| 6 | BOLT, HEX-5/16"X3/4"-GR5 Z&C | 8002-102 | 6 |
| 7 | NUT,FLG NYL-5/16"-Z&C (24" Fan) | 8041-101 | 7 |
| 8 | WASHER, CLIP, TOP BLOWER COVER (24" Fan) | 610-1597 | 3 |
| 9 | BOLT, HEX-5/16"X1 1/4"-GR5 Z&C | 8002-104 | 1 |

IMPELLER

PROPRIETARY AND CONFIDENTIAL

The information contained in this drawing is the sole property of Muskox. Any reproduction in part or as a whole without the written permission of Muskox is prohibited.

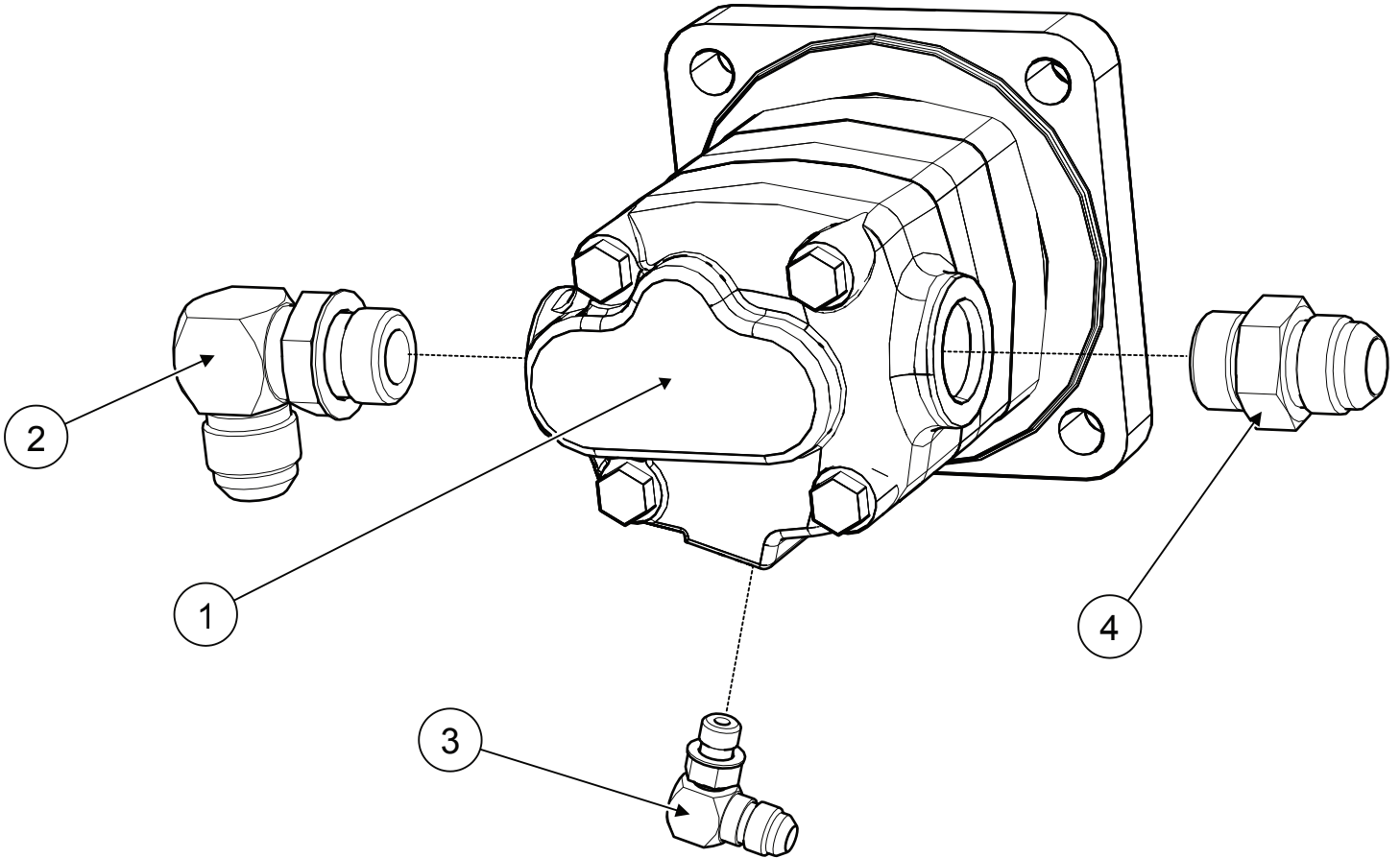


| ITEM # | DESCRIPTION | SKU's | QTY |
|--------|--------------------------------|----------|-----|
| 1 | ASSEMBLY, 90" WELDMENT | 800-0440 | 1 |
| 2 | IMPELLER, 24", WELDMENT | 800-0442 | 1 |
| 3 | Key Stock-5/16" X 5/16" X 1" | 8044-001 | 1 |
| 4 | NUT,SLOTTED-1" | 8041-002 | 1 |
| 5 | COVER, 24" BLOWER | 610-1590 | 1 |
| 6 | BOLT, HEX-5/16"X3/4"-GR5 Z&C | 8002-102 | 6 |
| 7 | NUT,FLG NYL-5/16"-Z&C | 8041-101 | 7 |
| 8 | WASHER, CLIP, TOP BLOWER COVER | 610-1597 | 3 |
| 9 | BOLT, HEX-5/16"X1 1/4"-GR5 Z&C | 8002-104 | 1 |

IMPELLER MOTOR

PROPRIETARY AND CONFIDENTIAL

The information contained in this drawing is the sole property of Muskox. Any reproduction in part or as a whole without the written permission of Muskox is prohibited.



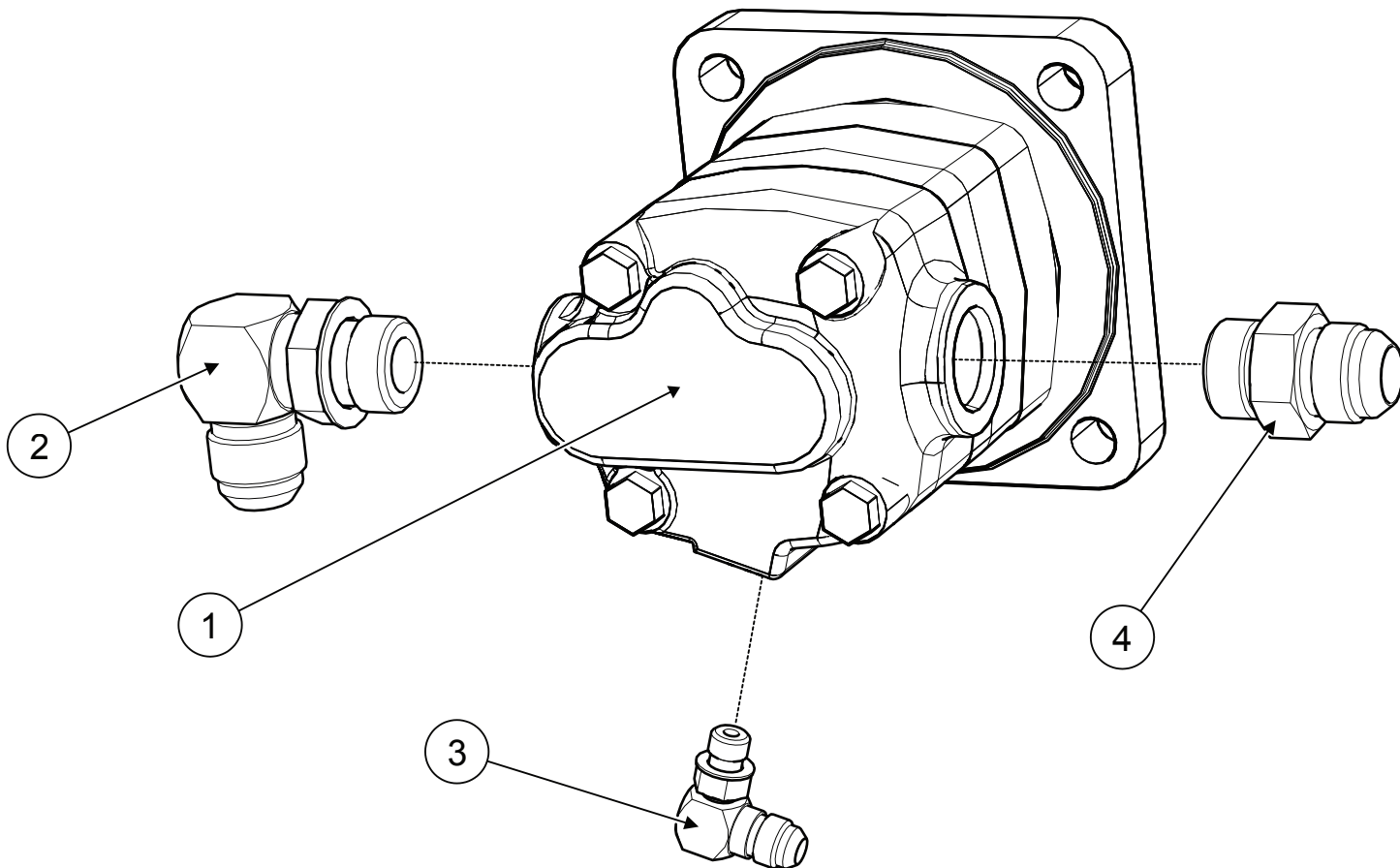
| ITEM # | DESCRIPTION | SKU's | QTY |
|--------|--|----------|-----|
| 1 | MOTOR, 4.9 CIR-IMPELLER-US (20" Fan)* | 0809-610 | 1 |
| 1 | MOTOR, 6.2 CIR-IMPELLER-US (20" Fan)* | 0809-604 | 1 |
| 1 | MOTOR, 8.0 CIR-IMPELLER-US (20" Fan)* | 0809-606 | 1 |
| 1 | MOTOR, 9.6 CIR-IMPELLER-US (24" Fan)* | 0809-611 | 1 |
| 1 | MOTOR, 11.9 CIR-IMPELLER-US (24" Fan)* | 0809-616 | 1 |
| 1 | MOTOR, 14.9 CIR-IMPELLER-US (24" Fan)* | 0809-617 | 1 |
| 2 | FITTING,12MJ-12MORB-90 DEG | 0809-717 | 1 |
| 3 | FITTING,6MJ-4MORB-90 DEG | 0809-715 | 1 |
| 4 | FITTING,12MJ-12MORB STRAIGHT | 0809-120 | 1 |

*CONTACT MUSKOX FOR IMPELLER MOTOR SPECIFIC TO YOUR UNIT

IMPELLER MOTOR

PROPRIETARY AND CONFIDENTIAL

The information contained in this drawing is the sole property of Muskox. Any reproduction in part or as a whole without the written permission of Muskox is prohibited.



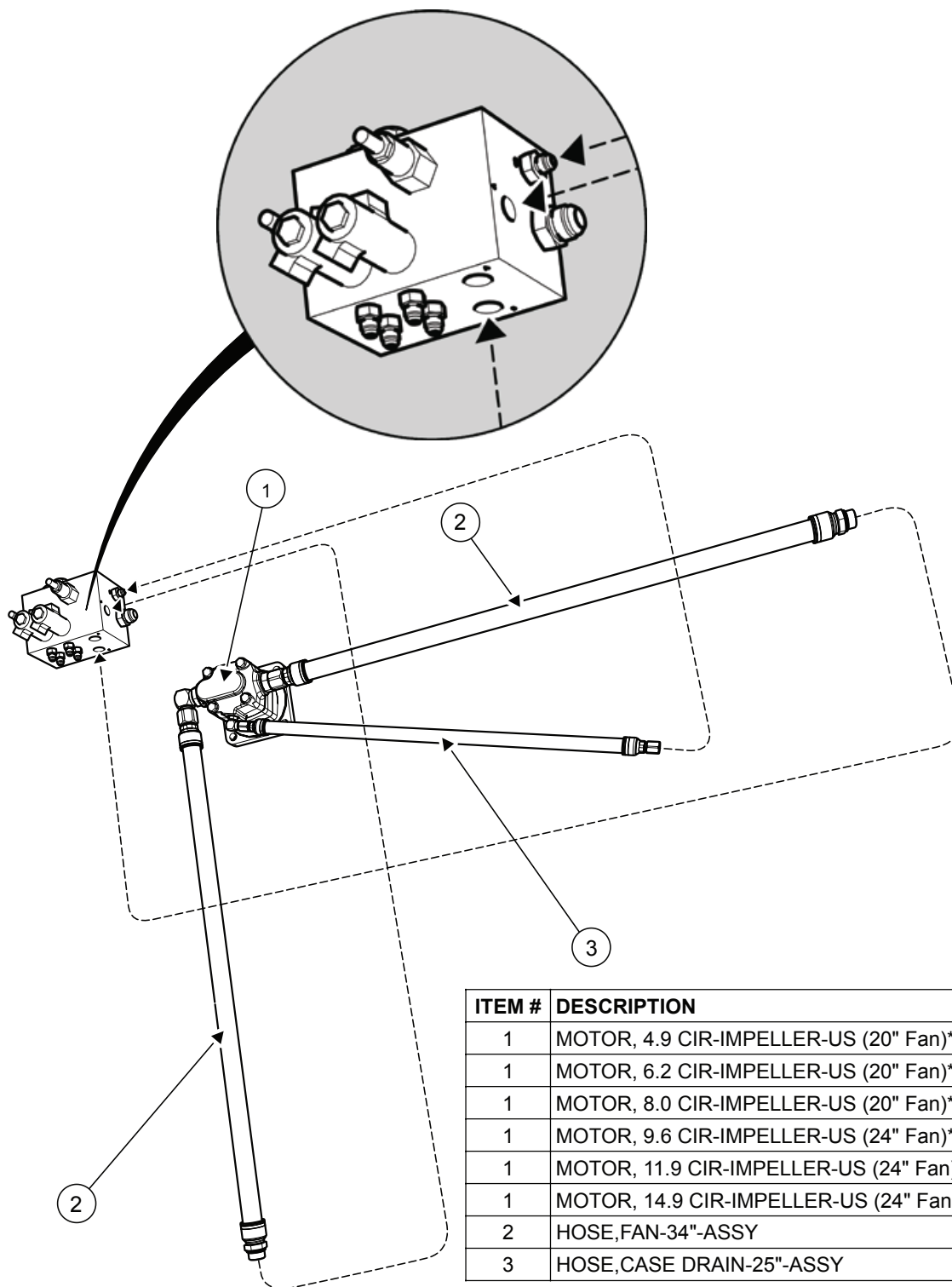
| ITEM # | DESCRIPTION | SKU's | QTY |
|--------|------------------------------|----------|-----|
| 1 | MOTOR, 11.9 CIR-IMPELLER-US* | 0809-616 | 1 |
| 1 | MOTOR, 14.9 CIR-IMPELLER-US* | 0809-617 | 1 |
| 2 | FITTING,12MJ-12MORB-90 DEG | 0809-717 | 1 |
| 3 | FITTING,6MJ-4MORB-90 DEG | 0809-715 | 1 |
| 4 | FITTING,12MJ-12MORB STRAIGHT | 0809-120 | 1 |

*CONTACT MUSKOX FOR IMPELLER MOTOR SPECIFIC TO YOUR UNIT

IMPELLER MOTOR HOSE

PROPRIETARY AND CONFIDENTIAL

The information contained in this drawing is the sole property of Muskox. Any reproduction in part or as a whole without the written permission of Muskox is prohibited.



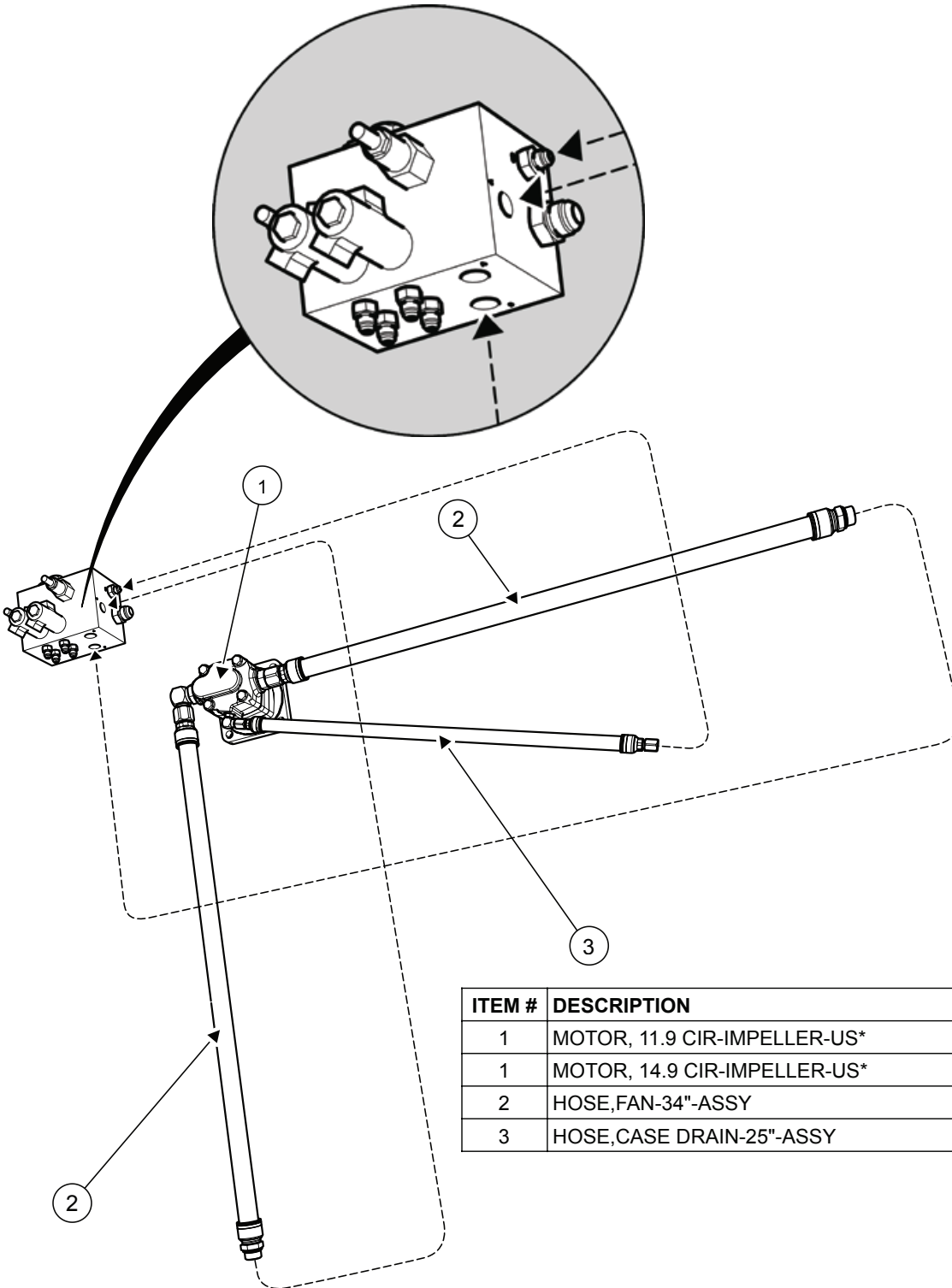
| ITEM # | DESCRIPTION | SKU's | QTY |
|--------|--|----------|-----|
| 1 | MOTOR, 4.9 CIR-IMPELLER-US (20" Fan)* | 0809-610 | 1 |
| 1 | MOTOR, 6.2 CIR-IMPELLER-US (20" Fan)* | 0809-604 | 1 |
| 1 | MOTOR, 8.0 CIR-IMPELLER-US (20" Fan)* | 0809-606 | 1 |
| 1 | MOTOR, 9.6 CIR-IMPELLER-US (24" Fan)* | 0809-611 | 1 |
| 1 | MOTOR, 11.9 CIR-IMPELLER-US (24" Fan)* | 0809-616 | 1 |
| 1 | MOTOR, 14.9 CIR-IMPELLER-US (24" Fan)* | 0809-617 | 1 |
| 2 | HOSE,FAN-34"-ASSY | 0809-031 | 2 |
| 3 | HOSE,CASE DRAIN-25"-ASSY | 0809-038 | 1 |

*CONTACT MUSKOX FOR IMPELLER MOTOR SPECIFIC TO YOUR UNIT

IMPELLER MOTOR HOSE

PROPRIETARY AND CONFIDENTIAL

The information contained in this drawing is the sole property of Muskox. Any reproduction in part or as a whole without the written permission of Muskox is prohibited.



| ITEM # | DESCRIPTION | SKU's | QTY |
|--------|------------------------------|----------|-----|
| 1 | MOTOR, 11.9 CIR-IMPELLER-US* | 0809-616 | 1 |
| 1 | MOTOR, 14.9 CIR-IMPELLER-US* | 0809-617 | 1 |
| 2 | HOSE,FAN-34"-ASSY | 0809-031 | 2 |
| 3 | HOSE,CASE DRAIN-25"-ASSY | 0809-038 | 1 |

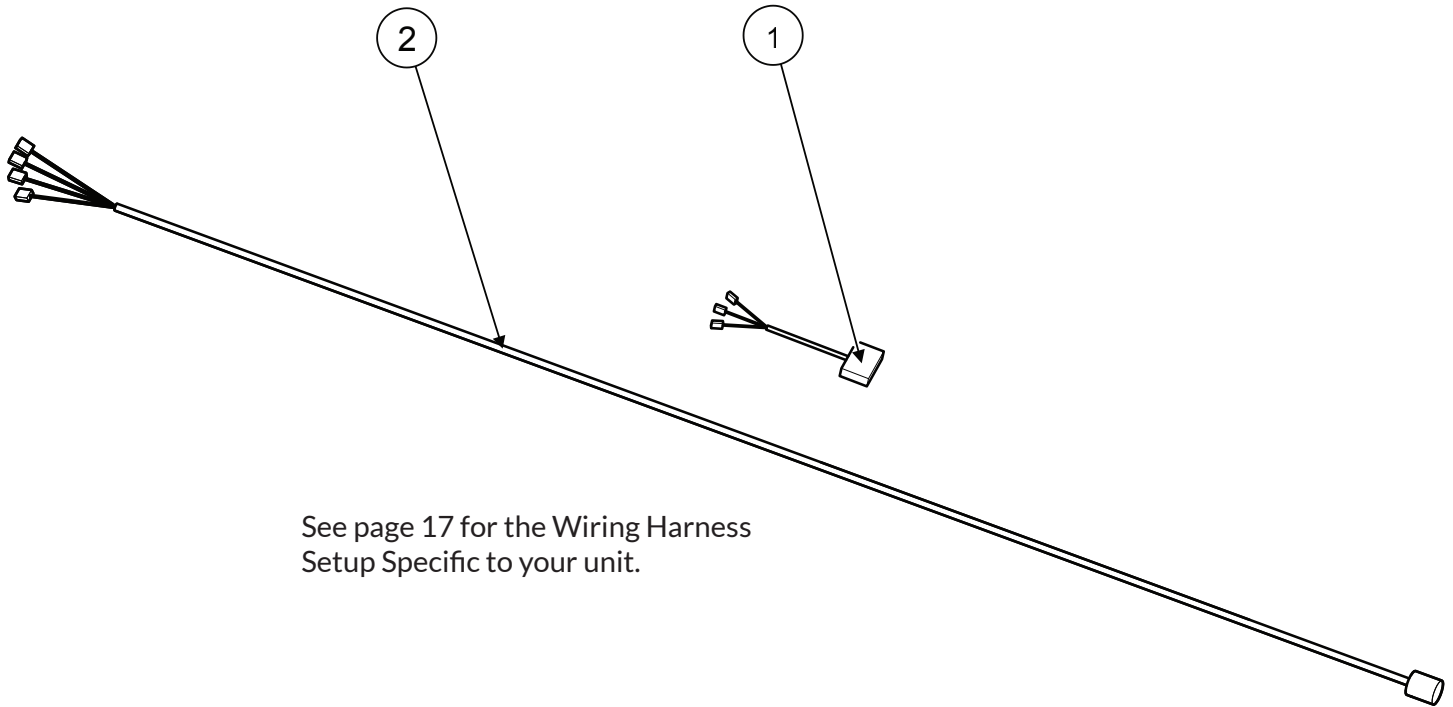
MODEL 24-78 ▼

MODEL 24-90 ▼

ELECTRIC HARNESS

PROPRIETARY AND CONFIDENTIAL

The information contained in this drawing is the sole property of MuskoX. Any reproduction in part or as a whole without the written permission of MuskoX is prohibited.



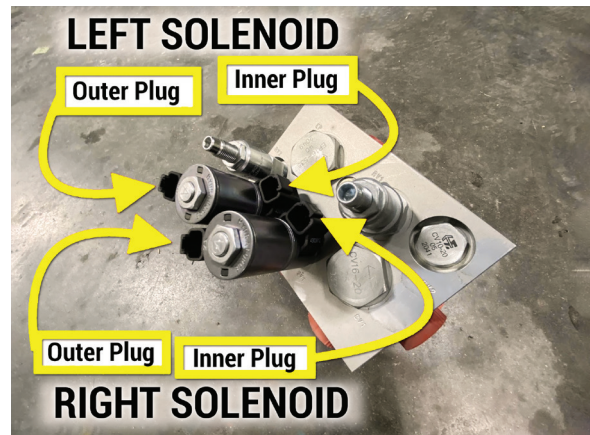
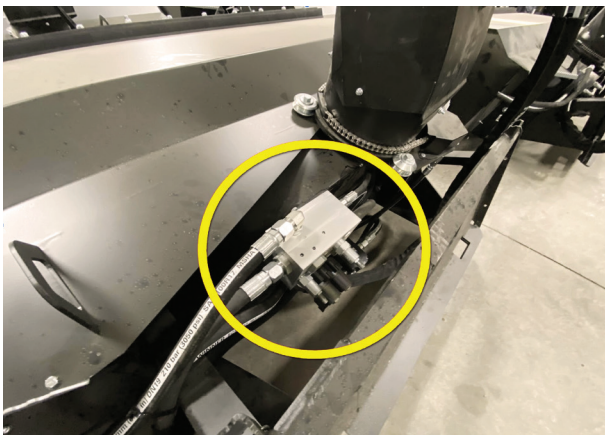
See page 17 for the Wiring Harness Setup Specific to your unit.

| ITEM # | DESCRIPTION | SKU's | QTY |
|--------|-------------------------------------|----------|-----|
| 1 | CONTROLLER,CANBUS-MAGNETIC (BOBCAT) | 0109-703 | 1 |
| 2 | HARNESS,BYPASS-ASV DEUTSCH | 0109-048 | 1 |
| 2 | HARNESS,BYPASS-ALL DEUTSCH | 0109-614 | 1 |

*CONTACT MUSKOX FOR PINOUT AND CONFIGURATION SPECIFIC TO YOUR UNIT

Muskox Wiring Harness Setup

| Wire Color | WHITE | ORANGE | GREEN | RED | |
|--|--|--|--|--|-----------------------------|
| Location of plugs on hydraulic block | Left Solenoid: Inner Plug Wire FN:Deflector Up | Left Solenoid: Outer Plug Wire FN:Deflector Down | Right Solenoid: Inner Plug Wire FN: Rotate Right | Right Solenoid: Outer Plug Wire FN:Rotate Left | |
| Brand, Color of cell is tape color on harness | Location of pins in the 14 pin aluminum loader plug | | | | Ground Wire |
| Bobcat | E | F | G | H | B |
| John Deere | E | D | C | G | A |
| CAT | D | C | F | E | B, If XPS:(K) If XHP:(N) |
| Kubota | G | H | F | E | B |
| JCB | E | F | G | H | B |
| Volvo | E | F | G | H | B |
| New Holland | D | C | E | F | B |
| Case | D | C | E | F | B |
| Wacker | E | F | D | C | B |
| Takeuchi | E | F | D | C | B |
| Joystick Controller | E | F | D | C | B |
| ASV (8 PIN) | G (red wire) | B (white wire) | C (green wire) | D (orange wire) | A |



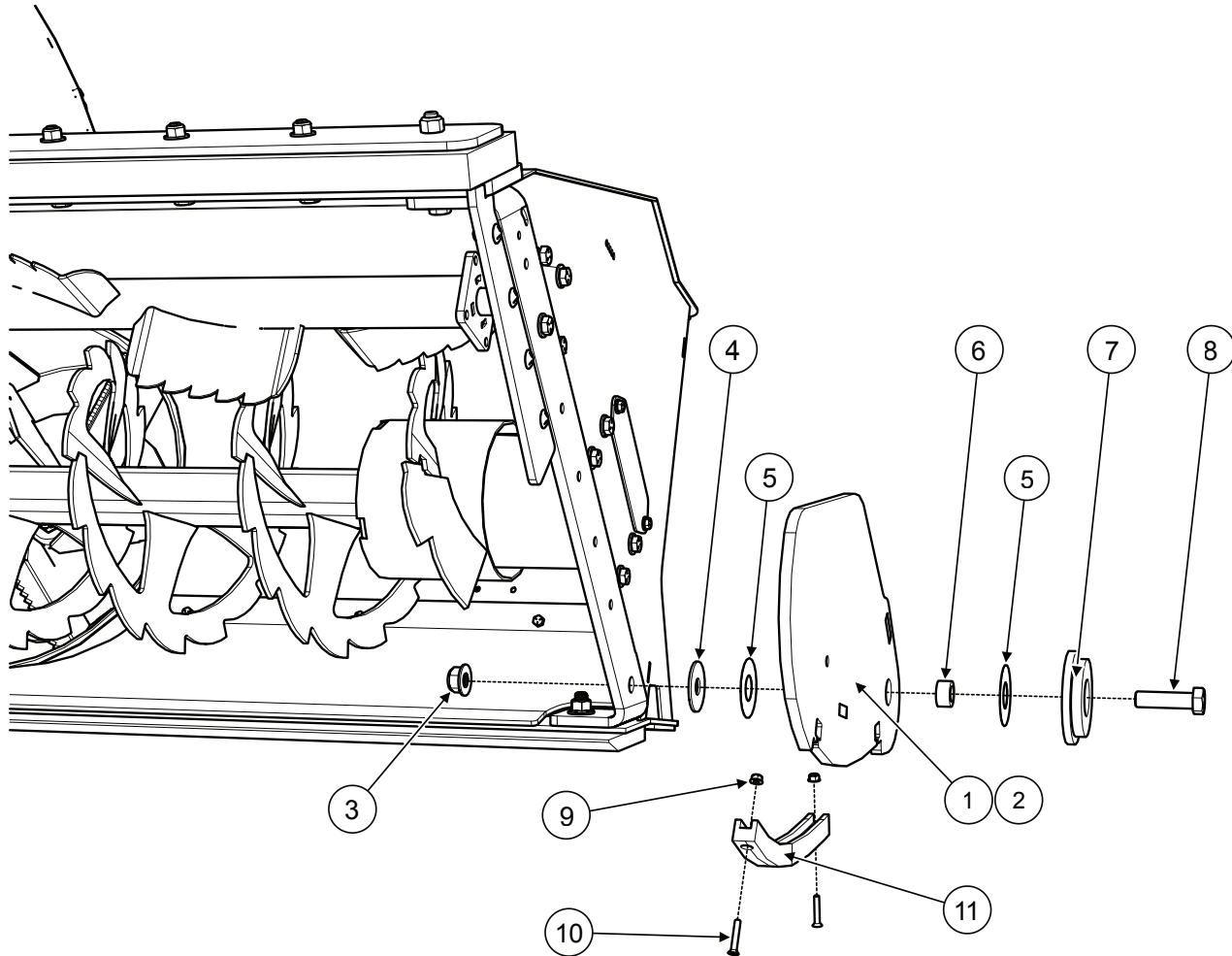
MODEL 24-78 ▼

MODEL 24-90 ▼

LEFT HAND FLAPPER

PROPRIETARY AND CONFIDENTIAL

The information contained in this drawing is the sole property of MuskoX. Any reproduction in part or as a whole without the written permission of MuskoX is prohibited.



| ITEM # | DESCRIPTION | SKU's | QTY |
|--------|---|----------|-----|
| 1 | PLATE,SIDE FLIPPER-LH 78"-WELDT (SHOWN) | 800-0003 | 1 |
| 2 | PLATE,SIDE FLIPPER-RH 78"-WELDT | 800-0002 | 1 |
| 3 | NUT,FLG NYL-3/4"-Z&C | 8041-501 | 1 |
| 4 | WASHER,FENDER-3/4"X2 1/2"-Z&C | 8050-500 | 1 |
| 5 | SHIM,PIVOT-STAINLESS STEEL | 611-0010 | 2 |
| 6 | BUSHING,FLIPPER-SIDE | 620-0058 | 1 |
| 7 | WASHER-WELDT | 800-0009 | 1 |
| 8 | BOLT,HEX-3/4"X2 3/4"-GR5 Z&C | 8002-510 | 1 |
| 9 | NUT,FLG NYL-1/4"-Z&C | 8041-001 | 2 |
| 10 | SCREW,MACH-CS 1/4"X1 1/2"-PHILLIPS | 8003-001 | 2 |
| 11 | SKID,SIDE FLIPPER | 620-0018 | 1 |

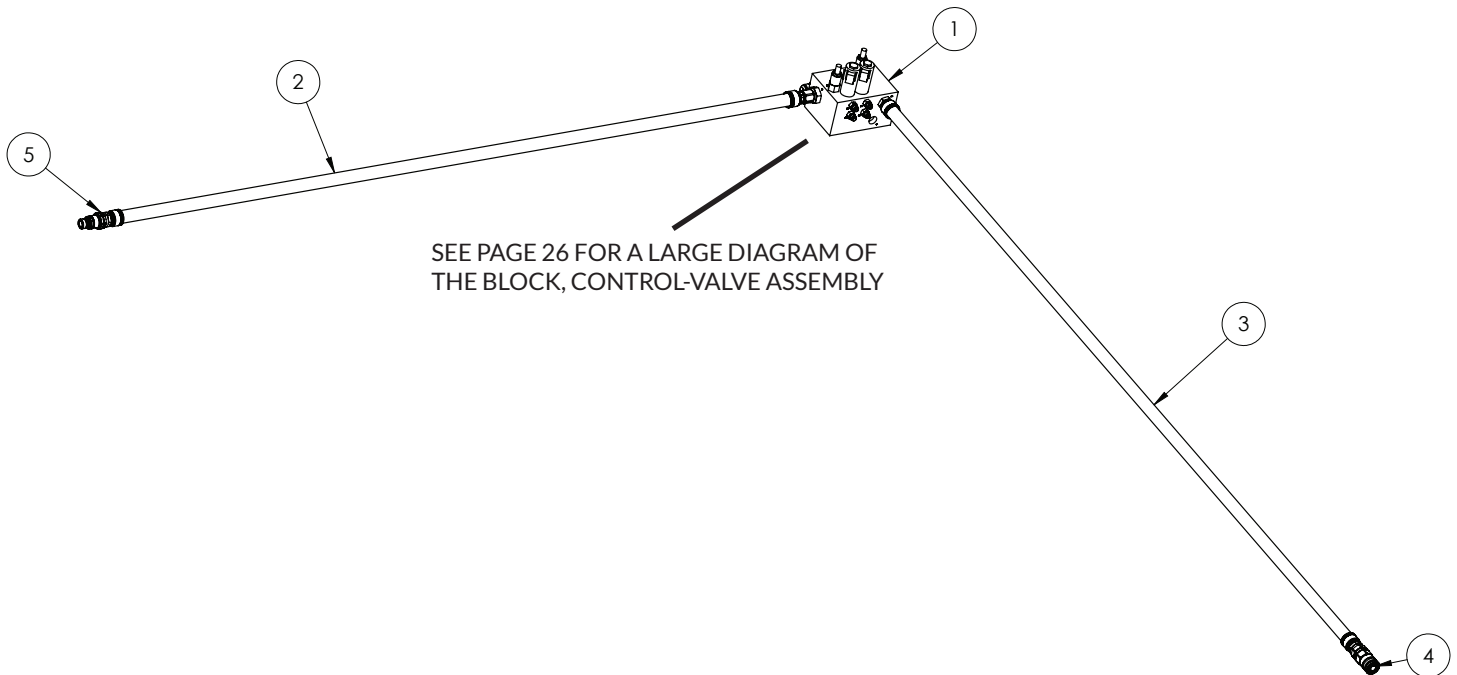
MODEL 24-78 ▼

MODEL 24-90 ▼

LOADER HOSE ASSEMBLY

PROPRIETARY AND CONFIDENTIAL

The information contained in this drawing is the sole property of Muskox. Any reproduction in part or as a whole without the written permission of Muskox is prohibited.



| ITEM # | DESCRIPTION | SKU # | QTY |
|--------|---|----------|-----|
| 1 | BLOCK,CONTROL-VALVE ASSY | 0809-608 | 1 |
| 2 | HOSE,LOADER-79"-ASSY | 0809-033 | 1 |
| 3 | HOSE,LOADER-92"-ASSY | 0809-032 | 1 |
| 4 | COUPLER,QUICK-FEMALE-ISO 16028;HQ SERIES; SIZE 12; 1 1/16-12 UNF; 12 SAE ORB PORT | 0809-720 | 1 |
| 5 | COUPLER,QUICK-MALE-ISO 16028; HQ SERIES; SIZE 12; 1 1/16-12 UNF; 12 SAE ORB PORT | 0809-721 | 1 |

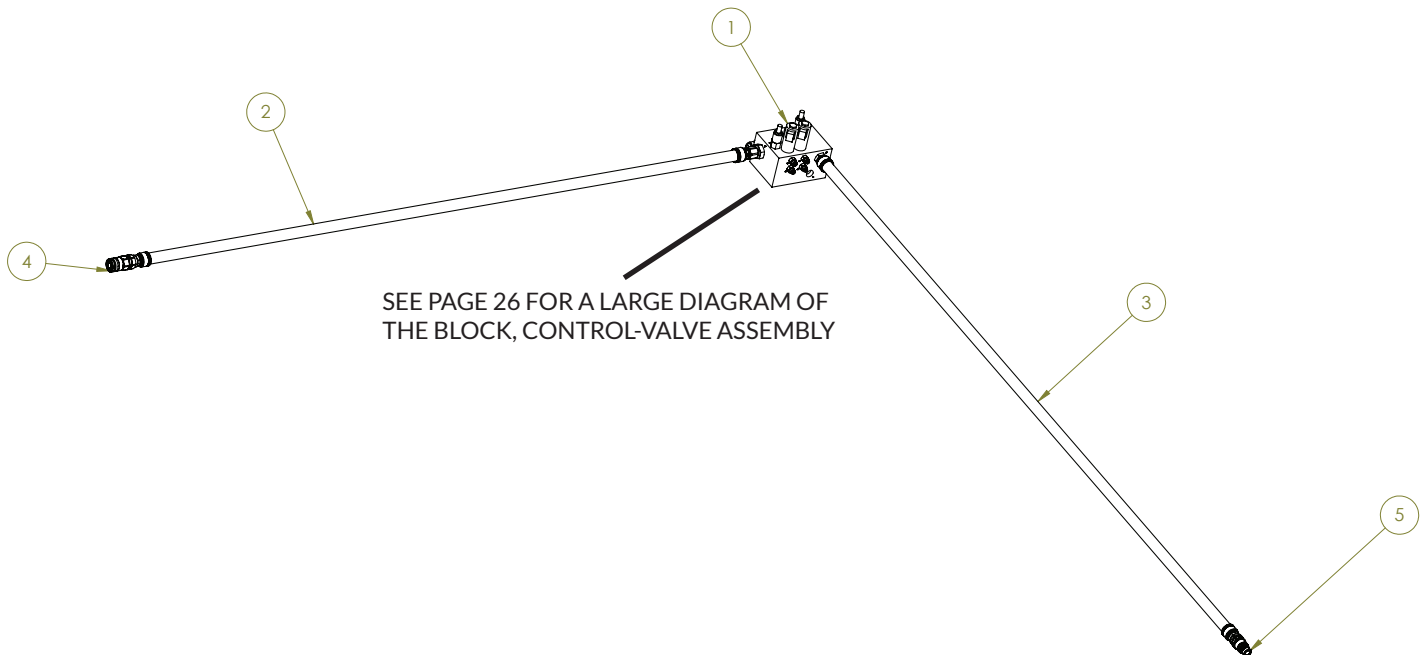
MODEL 24-78 ▼

MODEL 24-90 ▼

LOADER HOSE BOBCAT ASSEMBLY

PROPRIETARY AND CONFIDENTIAL

The information contained in this drawing is the sole property of MuskoX. Any reproduction in part or as a whole without the written permission of MuskoX is prohibited.



| ITEM # | DESCRIPTION | SKU # | QTY |
|--------|---|----------|-----|
| 1 | BLOCK,CONTROL-VALVE ASSY | 0809-608 | 1 |
| 2 | HOSE,LOADER-79"-BOBCAT ASSY | 0809-033 | 1 |
| 3 | HOSE,LOADER-92"-BOBCAT ASSY | 0809-032 | 1 |
| 4 | COUPLER,QUICK-FEMALE-ISO 16028;HQ SERIES; SIZE 12; 1 1/16-12 UNF; 12 SAE ORB PORT | 0809-720 | 1 |
| 5 | COUPLER,QUICK-MALE-ISO 16028; HQ SERIES; SIZE 12; 1 1/16-12 UNF; 12 SAE ORB PORT | 0809-721 | 1 |

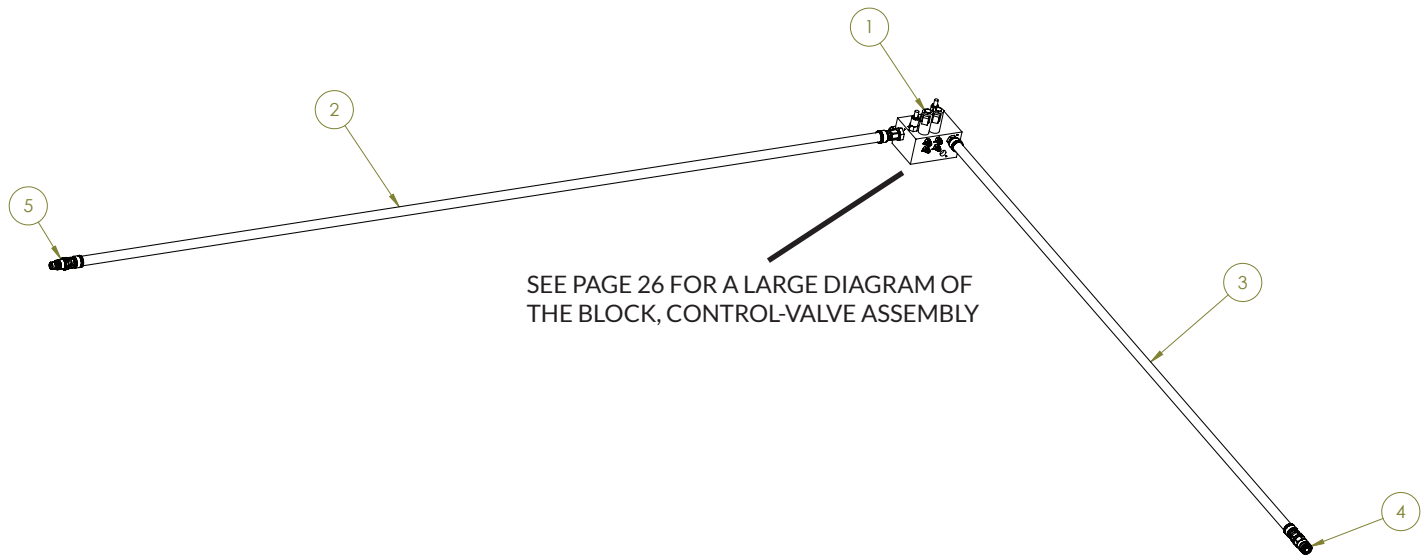
MODEL 24-78 ▼

MODEL 24-90 ▼

LOADER HOSE SINGLE ARM ASSEMBLY

PROPRIETARY AND CONFIDENTIAL

The information contained in this drawing is the sole property of MuskoX. Any reproduction in part or as a whole without the written permission of MuskoX is prohibited.

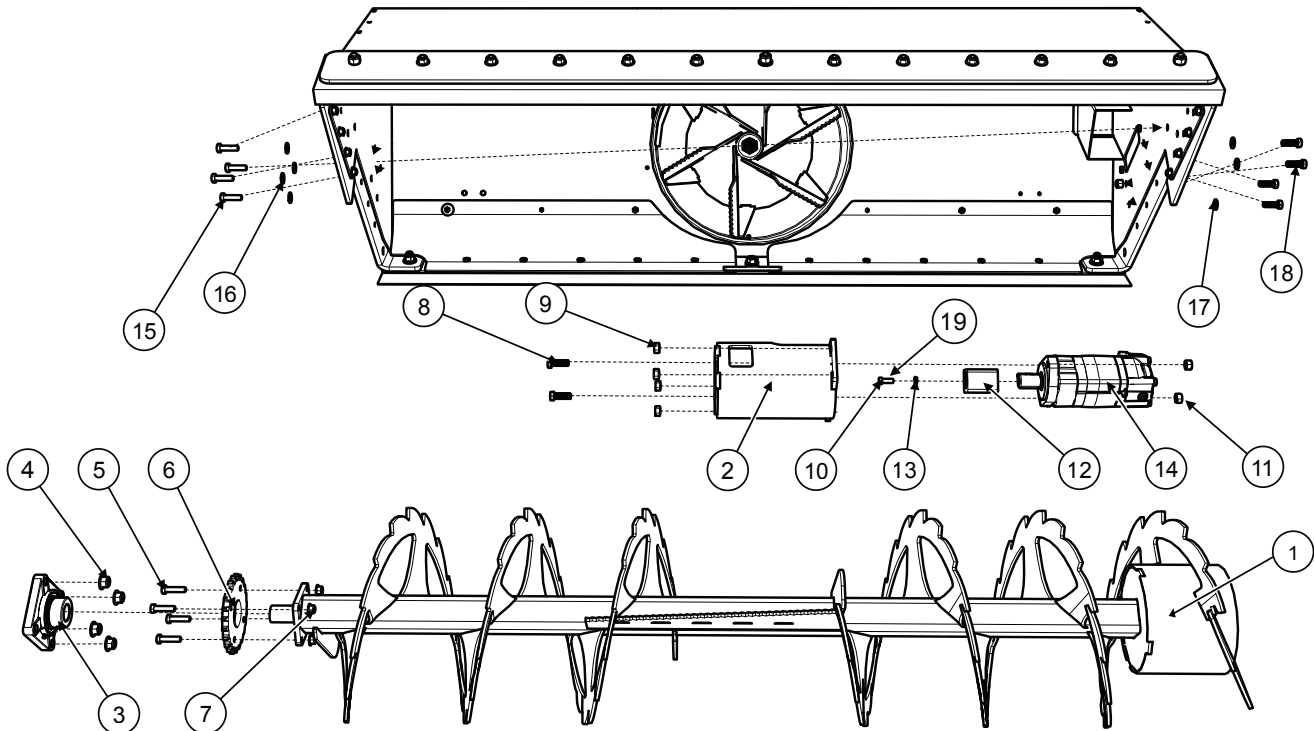


| ITEM # | DESCRIPTION | SKU # | QTY |
|--------|---|----------|-----|
| 1 | BLOCK,CONTROL-VALVE ASSY | 0809-608 | 1 |
| 2 | HOSE,LOADER-123"-ASSY | 0809-034 | 1 |
| 3 | HOSE,LOADER-92"-ASSY | 0809-032 | 1 |
| 4 | COUPLER,QUICK-FEMALE-ISO 16028;HQ SERIES; SIZE 12; 1 1/16-12 UNF; 12 SAE ORB PORT | 0809-720 | 1 |
| 5 | COUPLER,QUICK-MALE-ISO 16028; HQ SERIES; SIZE 12; 1 1/16-12 UNF; 12 SAE ORB PORT | 0809-721 | 1 |

LOWER AUGER

PROPRIETARY AND CONFIDENTIAL

The information contained in this drawing is the sole property of MuskoX. Any reproduction in part or as a whole without the written permission of MuskoX is prohibited.

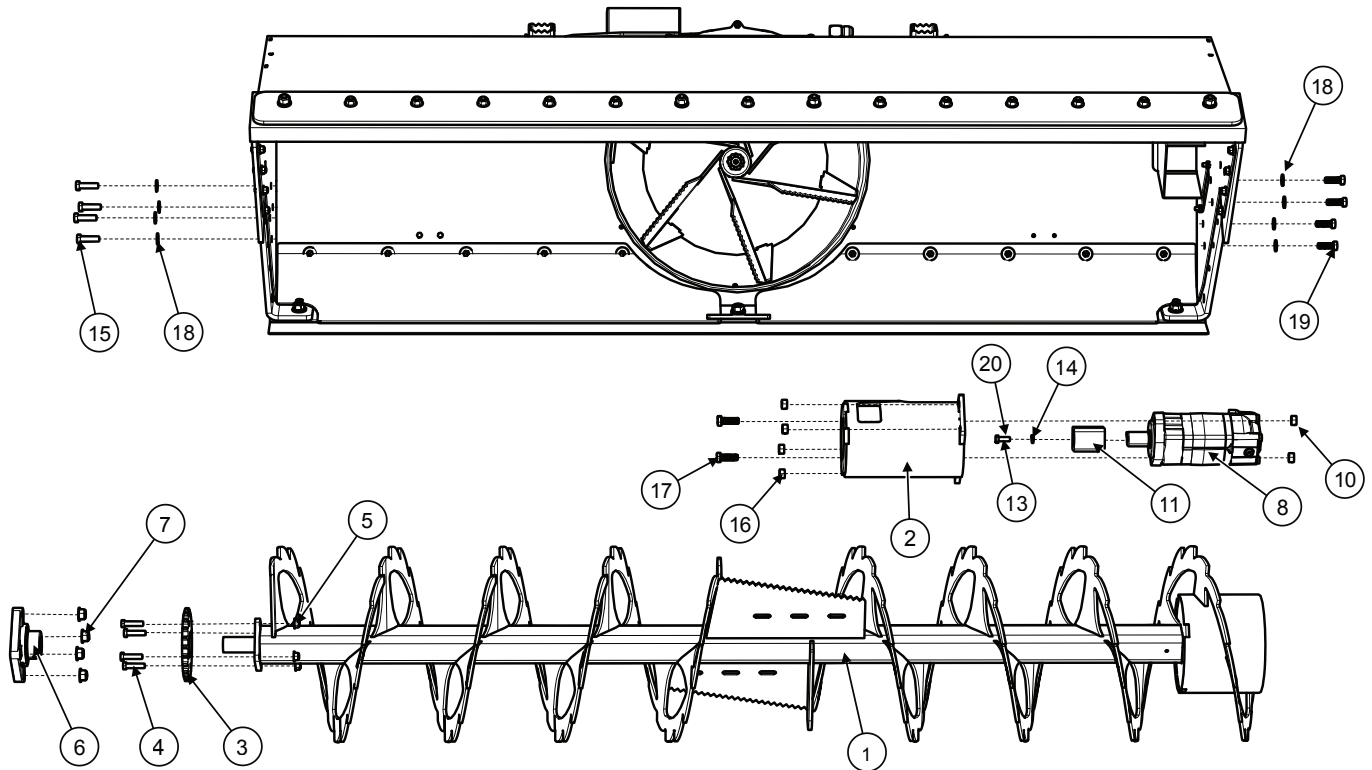


| ITEM # | DESCRIPTION | SKU's | QTY |
|--------|---|-------------|------|
| 1 | AUGER,LWR SPIRAL-WELDT | 800-0428-R6 | 1 |
| 2 | HOUSING, MOTOR-AUGGER-WELDT | 800-0007 | 1 |
| 3 | FLANGE BEARING,1 1/4" 4 BOLT-LOCK COLLAR 207 HOUSING HCFS207-20 | 700-0002 | 1 |
| 4 | NUT,FLG NYL-1/2"-Z&C | 8041-301 | 4 |
| 5 | BOLT,HEX-3/8"X1 1/2"-GR5 Z&C | 8002-205 | 4 |
| 6 | SPROCKET,#60-6023X, W/Hole Pattern | 430-0001 | 1 |
| 7 | NUT,FLG NYL-3/8"-Z&C | 8041-201 | 4 |
| 8 | BOLT, HEX-1/2"X1 3/4"-GR8 Z&Y | 8002-307 | 2 |
| 9 | NUT,REV LOCK-1/2"HEX NYL-G5 Z&C | 8043-101 | 4 |
| 10 | BOLT,HEX-3/8"X1"-GR8 Z&Y | 8002-203 | 1 |
| 11 | 1/2" TOP LOK GRD-9 ECO | 8043-106 | 2 |
| 12 | ADAPTER,HYD MOTOR TO LWR AUGER-WELDT | 800-0429-R2 | 1 |
| 13 | WASHER,LOCK-3/8"-Z&C | 8050-002 | 1 |
| 14 | MOTOR,24.0 CIR-AUGER-US | 0809-612 | 1 |
| 15 | BOLT,HEX-1/2"X1 3/4"-GR5 Z&C | 8002-306 | 4 |
| 16 | WASHER,FLAT-1/2"-Z&C | 8050-301 | 4 |
| 17 | WASHER,FLAT-1/2"-Z&C | 8050-301 | 4 |
| 18 | BOLT, HEX-1/2"X1 1/2"-GR8 Z&Y | 8002-305 | 4 |
| 19 | LOCTITE | 0102-001 | 0.01 |

LOWER AUGER

PROPRIETARY AND CONFIDENTIAL

The information contained in this drawing is the sole property of Muskox. Any reproduction in part or as a whole without the written permission of Muskox is prohibited.



| ITEM # | DESCRIPTION | SKU's | QTY |
|--------|---|-------------|------|
| 1 | AUGER, LOWER SPIRAL 90"- WELDMENT | 800-0437 | 1 |
| 2 | HOUSING, MOTOR-AUGER-WELDT | 800-0007 | 1 |
| 3 | SPROCKET,#60-6023X, W/Hole Pattern | 430-0001 | 1 |
| 4 | BOLT,HEX-3/8"X1 1/2"-GR5 Z&C | 8002-205 | 4 |
| 5 | NUT,FLG NYL-3/8"-Z&C | 8041-201 | 4 |
| 6 | FLANGE BEARING,1 1/4" 4 BOLT-LOCK COLLAR 207 HOUSING HCFS207-20 | 700-0002 | 1 |
| 7 | NUT,FLG NYL-1/2"-Z&C | 8041-301 | 4 |
| 8 | MOTOR,24.0 CIR-AUGER-US | 0809-612 | 1 |
| 10 | 1/2" TOP LOK GRD-9 ECO | 8043-106 | 2 |
| 11 | ADAPTER,HYD MOTOR TO LWR AUGER-WELDT | 800-0429-R2 | 1 |
| 13 | BOLT,HEX-3/8"X1"-GR8 Z&Y | 8002-203 | 1 |
| 14 | WASHER,LOCK-3/8"-Z&C | 8050-002 | 1 |
| 15 | BOLT,HEX-1/2"X1 3/4"-GR5 Z&C | 8002-306 | 4 |
| 16 | NUT,REV LOCK-1/2"HEX NYL-G5 Z&C | 8043-101 | 4 |
| 17 | BOLT, HEX-1/2"X1 3/4"-GR8 Z&Y | 8002-307 | 2 |
| 18 | WASHER,FLAT-1/2"-Z&C | 8050-301 | 8 |
| 19 | BOLT, HEX-1/2"X1 1/2"-GR8 Z&Y | 8002-305 | 4 |
| 20 | LOCTITE | 0102-001 | 0.01 |

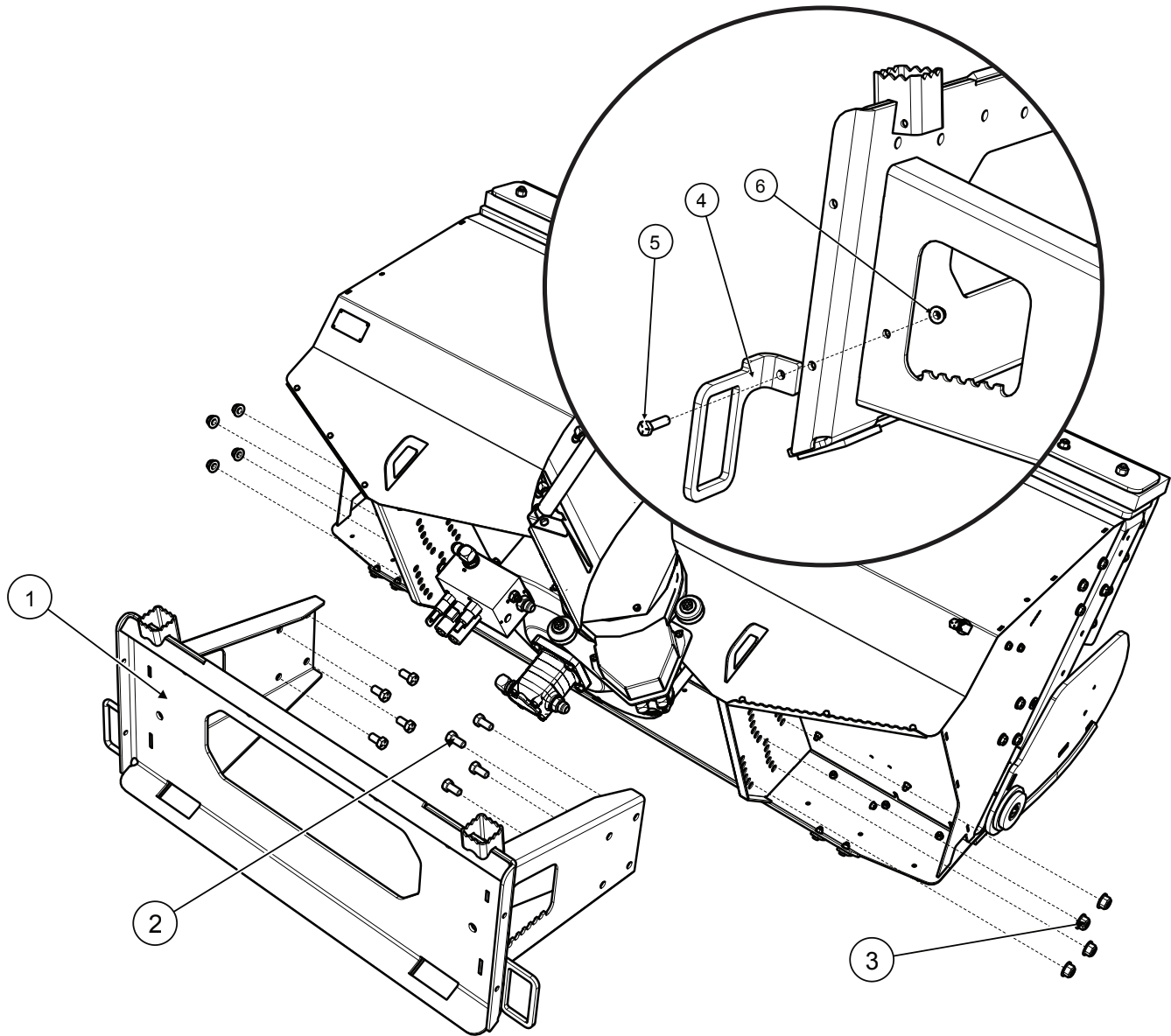
MODEL 24-78 ▼

MODEL 24-90 ▼

MOUNTING PLATE

PROPRIETARY AND CONFIDENTIAL

The information contained in this drawing is the sole property of Muskox. Any reproduction in part or as a whole without the written permission of Muskox is prohibited.

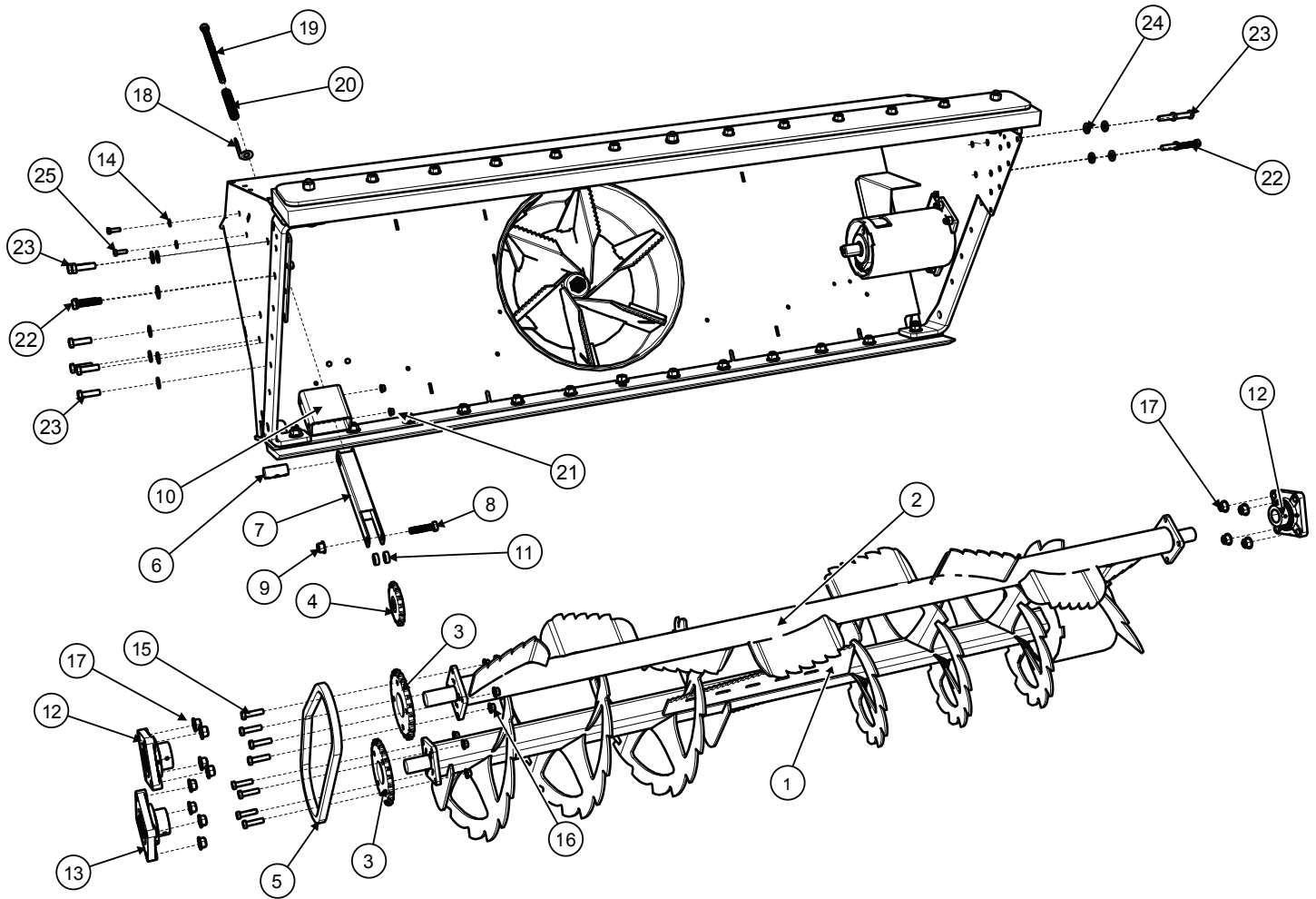


| ITEM # | DESCRIPTION | SKU's | QTY |
|--------|------------------------------|-------------|-----|
| 1 | PLATE,MNT-LOADER-WELDT | 800-0426-R4 | 1 |
| 2 | BOLT,HEX-5/8"X1 1/4"-GR8-Z&Y | 8002-405 | 8 |
| 3 | NUT,FLG TOPLOCK-5/8"-Z&C | 8041-511 | 8 |
| 4 | LOOP, HOSE, JCB | 610-1598 | 1 |
| 5 | BOLT, HEX-3/8"X1 1/2-GR5 Z&C | 8002-205 | 1 |
| 6 | NUT,FLG NYL-3/8"-Z&C | 8041-201 | 1 |

UPPER AUGER KIT

PROPRIETARY AND CONFIDENTIAL

The information contained in this drawing is the sole property of MuskoX. Any reproduction in part or as a whole without the written permission of MuskoX is prohibited.



UPPER AUGER KIT

PROPRIETARY AND CONFIDENTIAL

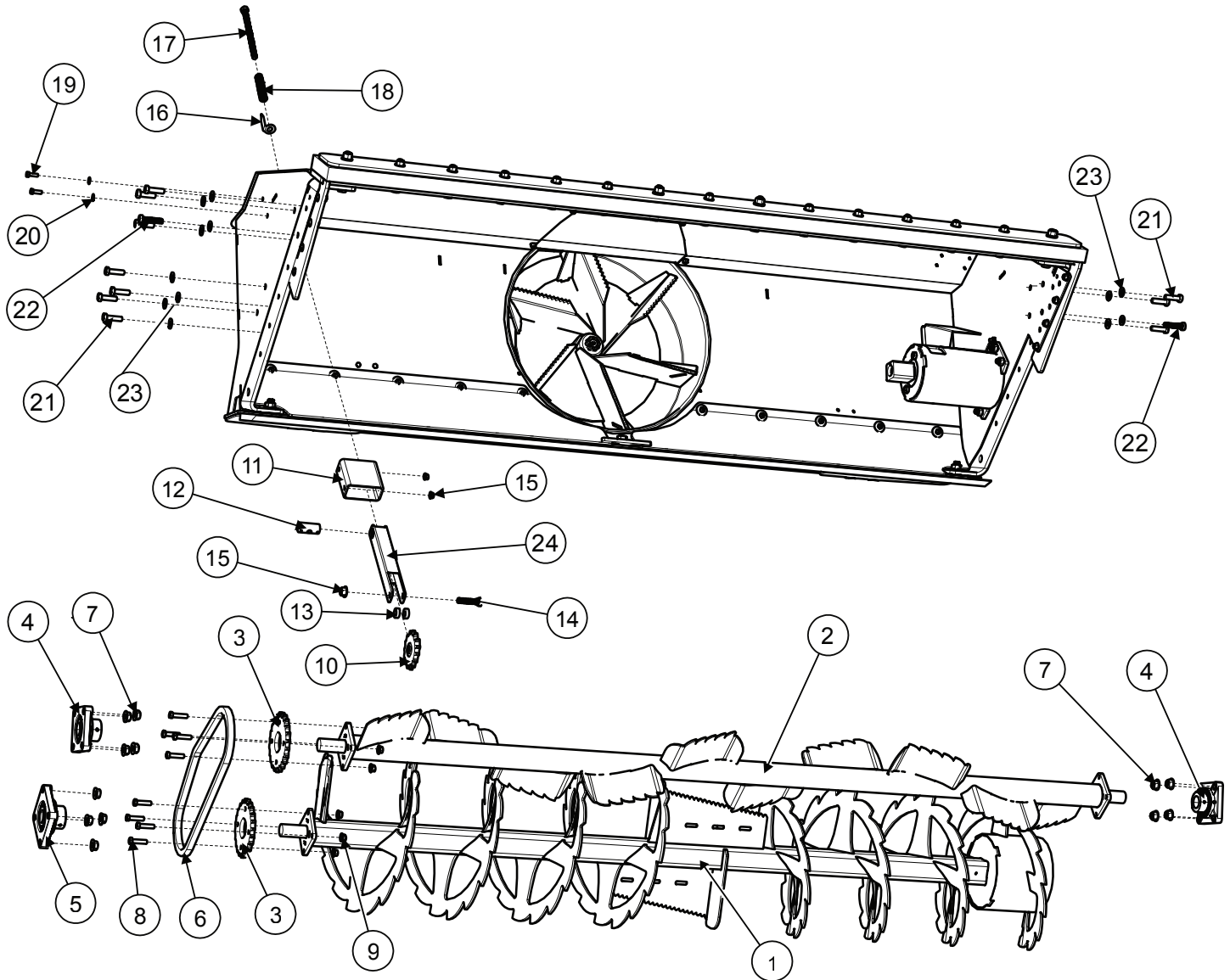
The information contained in this drawing is the sole property of MuskoX. Any reproduction in part or as a whole without the written permission of MuskoX is prohibited.

| ITEM # | DESCRIPTION | SKU's | QTY |
|--------|---|-------------|-----|
| 1 | AUGER,LWR SPIRAL-WELDT | 800-0428-R6 | 1 |
| 2 | AUGER,UPR PADDLE-WELDT | 800-0436-R3 | 1 |
| 3 | SPROCKET,#60-6023X, W/Hole Pattern | 430-0001 | 2 |
| 4 | SPROCKET,15T 1/2" BORE 60P-IDLER W/BALL BEARING | 430-0004 | 1 |
| 5 | CHAIN,AUGER-59 LINK-#60 ROLLER | 620-0019 | 1 |
| 6 | TENSIONER, THREADED SPOOL | 620-0059 | 1 |
| 7 | SPRING TENSIONER, TUBE | 610-1571 | 1 |
| 8 | 1_2 x 2 1_4 Medium-Strength Grade 5 Steel Hex Head Screw | 8002-308 | 1 |
| 9 | NUT,FLG NYL-1/2"-Z&C | 8041-301 | 1 |
| 10 | SPRING TENSIONER GUIDE, TUBE | 610-1575 | 1 |
| 11 | SPACER,PULLEY-TENSION IDLER-Z&C | 620-0025-R1 | 2 |
| 12 | FLANGE BEARING,1 1/4" 4 BOLT-LOCK COLLAR 206 HOUSING HCFS206-20 | 700-0001 | 2 |
| 13 | FLANGE BEARING,1 1/4" 4 BOLT-LOCK COLLAR 207 HOUSING HCFS207-20 | 700-0002 | 1 |
| 14 | WASHER,FLAT-5/16"X11/16"-Z&C | 8050-100 | 2 |
| 15 | BOLT,HEX-3/8"X1 1/2"-GR5 Z&C | 8002-205 | 8 |
| 16 | NUT,FLG NYL-3/8"-Z&C | 8041-201 | 8 |
| 17 | NUT,FLG NYL-1/2"-Z&C | 8041-301 | 12 |
| 18 | TENSIONER-INDICATOR | 610-1580 | 1 |
| 19 | TAP BOLT,HEX 1/2"X8"-GR5 Z&C | 8002-321 | 1 |
| 20 | TENSIONER SPRING | 8051-004 | 1 |
| 21 | NUT,FLG NYL-5/16"-Z&C | 8041-101 | 2 |
| 22 | 1_2 x 2 1_4 Medium-Strength Grade 5 Steel Hex Head Screw | 8002-308 | 2 |
| 23 | BOLT,HEX-1/2"X1 3/4"-GR5 Z&C | 8002-306 | 10 |
| 24 | WASHER,FLAT-1/2"-Z&C | 8050-301 | 12 |
| 25 | BOLT,HEX-5/16"X1"-GR5 Z&C | 8002-103 | 2 |

UPPER AUGER KIT

PROPRIETARY AND CONFIDENTIAL

The information contained in this drawing is the sole property of MuskoX. Any reproduction in part or as a whole without the written permission of MuskoX is prohibited.



UPPER AUGER KIT

PROPRIETARY AND CONFIDENTIAL

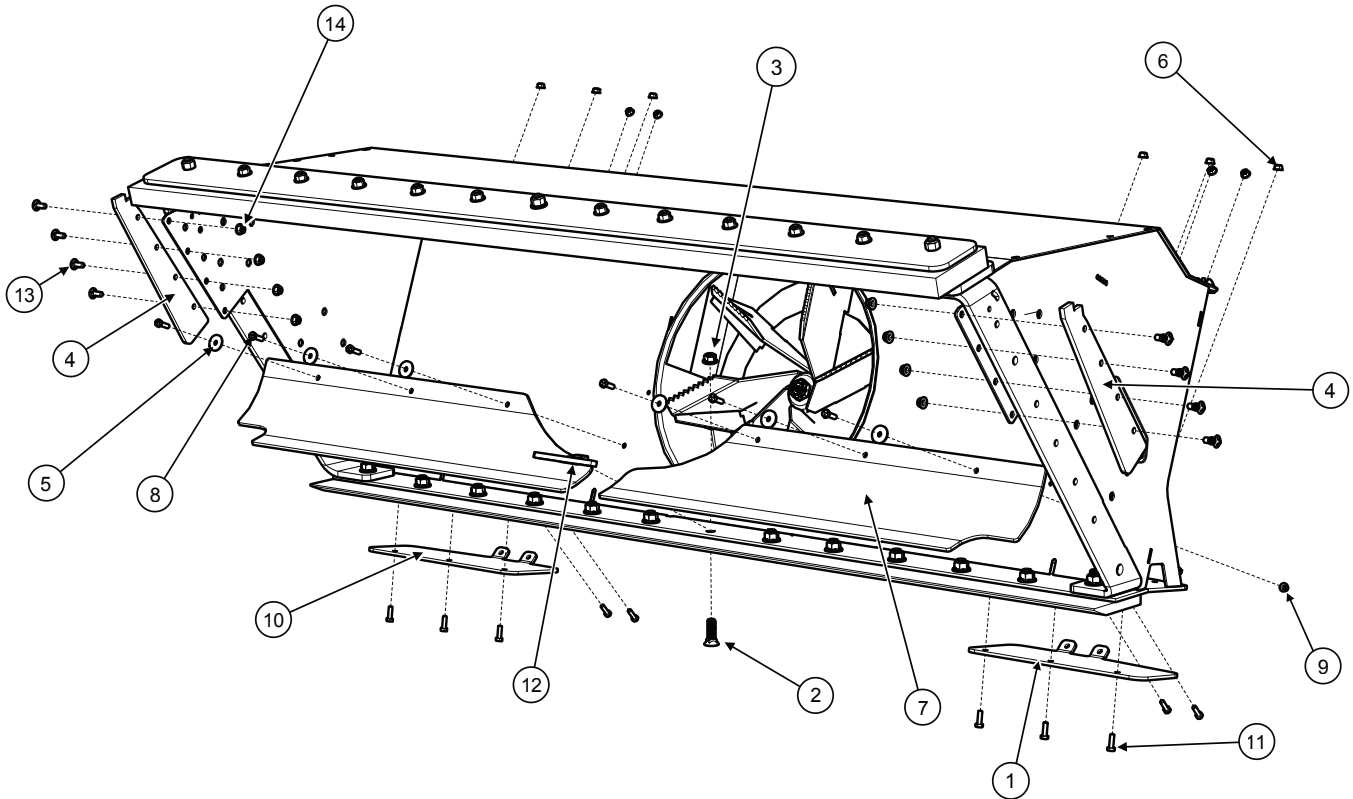
The information contained in this drawing is the sole property of MuskoX. Any reproduction in part or as a whole without the written permission of MuskoX is prohibited.

| ITEM # | DESCRIPTION | SKU's | QTY |
|--------|---|-------------|-----|
| 1 | AUGER, LOWER SPIRAL 90"- WELDMENT | 800-0437 | 1 |
| 2 | AUGER, UPPER, PADDLE, 90" WELDMENT | 800-0438 | 1 |
| 3 | SPROCKET,#60-6023X, W/Hole Pattern | 430-0001 | 2 |
| 4 | FLANGE BEARING,1 1/4" 4 BOLT-LOCK COLLAR 206 HOUSING HCFS206-20 | 700-0001 | 2 |
| 5 | FLANGE BEARING,1 1/4" 4 BOLT-LOCK COLLAR 207 HOUSING HCFS207-20 | 700-0002 | 1 |
| 6 | CHAIN,AUGER-59 LINK-#60 ROLLER | 620-0019 | 1 |
| 7 | NUT,FLG NYL-1/2"-Z&C | 8041-301 | 12 |
| 8 | BOLT,HEX-3/8"X1 1/2"-GR5 Z&C | 8002-205 | 8 |
| 9 | NUT,FLG NYL-3/8"-Z&C | 8041-201 | 8 |
| 10 | SPROCKET,15T 1/2" BORE 60P-IDLER W/BALL BEARING | 430-0004 | 1 |
| 11 | SPRING TENSIONER GUIDE, TUBE | 610-1575 | 1 |
| 12 | TENSIONER, THREADED SPOOL | 620-0059 | 1 |
| 13 | SPACER,PULLEY-TENSION IDLER-Z&C | 620-0025-R1 | 2 |
| 14 | 1_2 x 2 1_4 Medium-Strength Grade 5 Steel Hex Head Screw | 8002-308 | 1 |
| 15 | NUT,FLG NYL-5/16"-Z&C | 8041-101 | 3 |
| 16 | TENSIONER-INDICATOR | 610-1580 | 1 |
| 17 | TAP BOLT,HEX 1/2"X8"-GR5 Z&C | 8002-321 | 1 |
| 18 | TENSIONER SPRING | 8051-004 | 1 |
| 19 | BOLT,HEX-5/16"X1"-GR5 Z&C | 8002-103 | 2 |
| 20 | WASHER,FLAT,SAE-3/8"-Z&C | 8050-201 | 2 |
| 21 | BOLT,HEX-1/2"X1 3/4"-GR5 Z&C | 8002-306 | 10 |
| 22 | 1_2 x 2 1_4 Medium-Strength Grade 5 Steel Hex Head Screw | 8002-308 | 2 |
| 23 | WASHER,FLAT-1/2"-Z&C | 8050-301 | 12 |
| 24 | SPRING TENSIONER, TUBE | 610-1571 | 1 |

PLASTIC WEAR GUIDES

PROPRIETARY AND CONFIDENTIAL

The information contained in this drawing is the sole property of MuskoX. Any reproduction in part or as a whole without the written permission of MuskoX is prohibited.

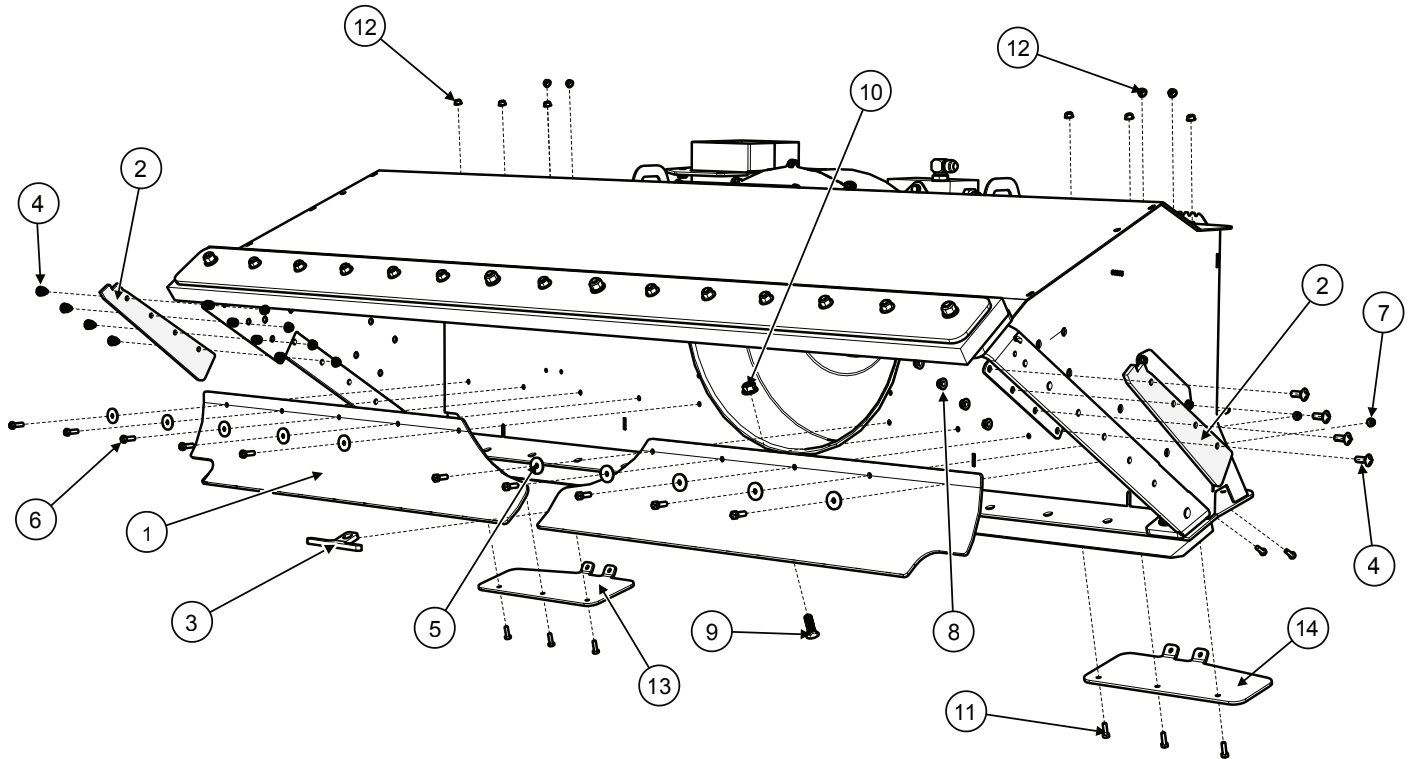


| ITEM # | DESCRIPTION | SKU's | QTY |
|--------|---------------------------------|-------------|-----|
| 1 | PAD GLIDE-PLATE, LEFT | 611-0017-R2 | 1 |
| 2 | BOLT, PLOW-5/8"X2"-GR5 PLAIN | 8003-303 | 1 |
| 3 | NUT, HEAVY HEX-5/8"-PLAIN | 8041-513 | 1 |
| 4 | GUIDE,SIDE-UHMW REGRIND-BLACK | 611-0008 | 2 |
| 5 | WASHER,FLAT-HD 5/16"X1 1/4"-Z&C | 8050-496 | 6 |
| 6 | NUT,FLG NYL-5/16"-Z&C | 8041-101 | 9 |
| 7 | GUIDE,SNOW-LWR AUGER-HMW | 611-0002 | 2 |
| 8 | BOLT,HEX-5/16"X1-1/2"-GR5 Z&C | 8002-103 | 6 |
| 9 | NUT,FLG NYL-5/16"-Z&C | 8041-101 | 6 |
| 10 | PAD GLIDE-PLATE, RIGHT | 611-0003-R2 | 1 |
| 11 | BOLT,HEX-5/16"X1 1/2"-GR5 Z&C | 8002-103 | 10 |
| 12 | T BRKT-HMW HOLD DOWN | 610-1554-R2 | 1 |
| 13 | BOLT,CARRIAGE-3/8"X1"-GR5 Z&C | 8001-003 | 8 |
| 14 | NUT,FLG NYL-3/8"-Z&C | 8041-201 | 8 |

PLASTIC WEAR GUIDES

PROPRIETARY AND CONFIDENTIAL

The information contained in this drawing is the sole property of MuskoX. Any reproduction in part or as a whole without the written permission of MuskoX is prohibited.



| ITEM # | DESCRIPTION | SKU's | QTY |
|--------|---------------------------------|-------------|-----|
| 1 | GUIDE,SNOW-LWR AUGER-HMW | 611-0002 | 2 |
| 2 | GUIDE,SIDE-UHMW REGRIND-BLACK | 611-0008 | 2 |
| 3 | T BRKT-HMW HOLD DOWN | 610-1554-R2 | 1 |
| 4 | BOLT,CARRIAGE-3/8"X1"-GR5 Z&C | 8001-003 | 8 |
| 5 | WASHER,FLAT-HD 5/16"X1 1/4"-Z&C | 8050-496 | 10 |
| 6 | BOLT,HEX-5/16"X1 1/2"-GR5 Z&C | 8002-103 | 10 |
| 7 | NUT,FLG NYL-5/16"-Z&C | 8041-101 | 10 |
| 8 | NUT,FLG NYL-3/8"-Z&C | 8041-201 | 8 |
| 9 | BOLT, PLOW-5/8"X2"-GR5 PLAIN | 8003-303 | 1 |
| 10 | NUT, HEAVY HEX-5/8"-Z&C | 8041-513 | 1 |
| 11 | BOLT,HEX-5/16"X1 1/2"-GR5 Z&C | 8002-103 | 10 |
| 12 | NUT,FLG NYL-5/16"-Z&C | 8041-101 | 10 |
| 13 | PAD GLIDE-PLATE, RIGHT | 611-0003-R2 | 1 |
| 14 | PAD GLIDE-PLATE, LEFT | 611-0017-R2 | 1 |

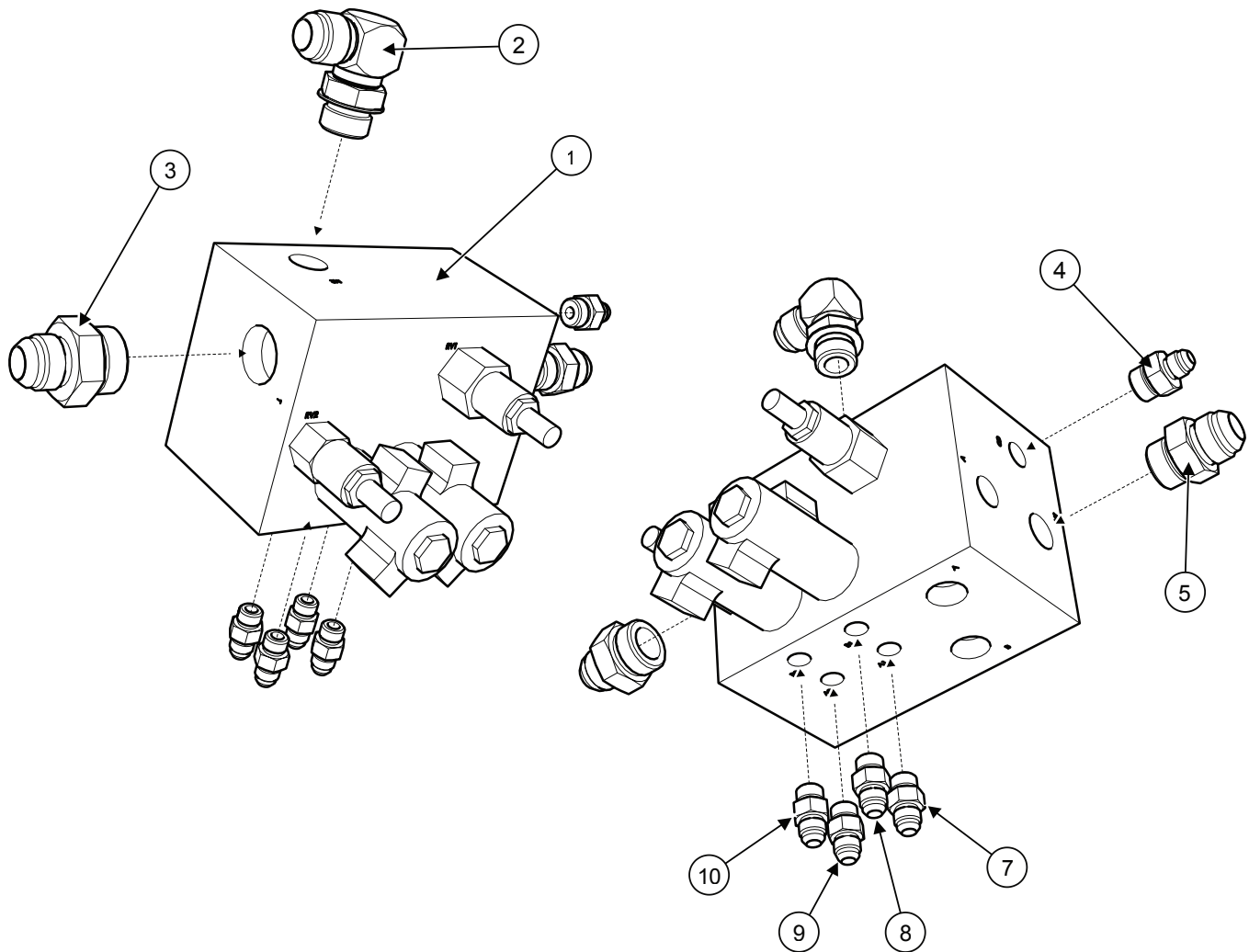
MODEL 24-78 ▼

MODEL 24-90 ▼

HYDRAULIC BLOCK

PROPRIETARY AND CONFIDENTIAL

The information contained in this drawing is the sole property of MuskoX. Any reproduction in part or as a whole without the written permission of MuskoX is prohibited.



| ITEM # | DESCRIPTION | SKU's | QTY |
|--------|---|----------|-----|
| 1 | BLOCK,CONTROL-VALVE | 0809-614 | 1 |
| 2 | FITTING,12MJ-12MORB-90 DEG | 0809-717 | 1 |
| 3 | FITTING,12MJ-16MORB STRAIGHT | 0809-121 | 1 |
| 4 | FITTING,6MJ-8MORB STRAIGHT | 0809-004 | 1 |
| 5 | FITTING,12MJ-12MORB STRAIGHT | 0809-120 | 1 |
| 7 | FITTING,6MJ-6MORB STRAIGHT | 0809-118 | 1 |
| 8 | FITTING,6MJ-6MORB STRAIGHT-.031 ORIFICE | 0809-117 | 1 |
| 9 | FITTING,6MJ-6MORB STRAIGHT | 0809-118 | 1 |
| 10 | FITTING,6MJ-6MORB STRAIGHT-.031 ORIFICE | 0809-117 | 1 |

BOLT TORQUE SPECIFICATIONS

GENERAL TORQUE SPECIFICATION TABLE

Use the following chart when determining bolt torque specifications when special torques are not given. Always use grade 5 or better when replacing bolts.

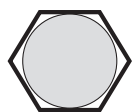
SAE BOLT TORQUE SPECIFICATIONS

NOTE: The following torque values are for use with extreme pressure lubricants, plating or hard washer applications Increase torque 15 percent when using hardware that is unplated and either dry or lubricated with engine oil.

| Bolt Size | | SAE GRADE 5 TORQUE | | | | SAE GRADE 8 TORQUE | | | |
|-----------|-------------|--------------------|------|---------------|------|--------------------|------|---------------|------|
| | | Pounds Feet | | Newton-Meters | | Pounds Feet | | Newton Meters | |
| Inches | Millimeters | UNC | UNF | UNC | UNF | UNC | UNF | UNC | UNF |
| 1/4 | 6.35 | 8 | 9 | 11 | 12 | 10 | 13 | 14 | 18 |
| 5/16 | 7.94 | 14 | 17 | 19 | 23 | 20 | 25 | 27 | 34 |
| 3/8 | 9.53 | 30 | 36 | 41 | 49 | 38 | 46 | 52 | 62 |
| 7/16 | 11.11 | 46 | 54 | 62 | 73 | 60 | 71 | 81 | 96 |
| 1/2 | 12.70 | 68 | 82 | 92 | 111 | 94 | 112 | 127 | 152 |
| 9/16 | 14.29 | 94 | 112 | 127 | 152 | 136 | 163 | 184 | 221 |
| 5/8 | 15.88 | 128 | 153 | 174 | 207 | 187 | 224 | 254 | 304 |
| 3/4 | 19.05 | 230 | 275 | 312 | 373 | 323 | 395 | 438 | 536 |
| 7/8 | 22.23 | 340 | 408 | 461 | 553 | 510 | 612 | 691 | 830 |
| 1 | 25.40 | 493 | 592 | 668 | 803 | 765 | 918 | 1037 | 1245 |
| 1-1/8 | 25.58 | 680 | 748 | 922 | 1014 | 1088 | 1224 | 1475 | 1660 |
| 1-1/4 | 31.75 | 952 | 1054 | 1291 | 1429 | 1547 | 1700 | 2097 | 2305 |
| 1-3/8 | 34.93 | 1241 | 1428 | 1683 | 1936 | 2023 | 2312 | 2743 | 3135 |
| 1-1/2 | 38.10 | 1649 | 1870 | 2236 | 2535 | 2686 | 3026 | 3642 | 4103 |

BOLT HEAD IDENTIFICATION MARKS AS PER GRADE.

NOTE: Manufacturing Marks Will Vary



GRADE 2
No Markings



GRADE 5
3 Radial Lines



GRADE 8
6 Radial Lines

NOTE: Nylock nuts are utilized when greater resistance to vibrating loose is required, and greater operating temperatures are not a factor. In addition, like lock nuts, nylock nuts have a safety feature that if the bolt does vibrate loose, the nut will remain on the screw. Install nylock nuts to the standard torque shown above.

TORQUE SPECIFICATIONS FOR UHMW (PLASTIC) PARTS: Fasteners attached to UHMW (plastic) parts should ONLY be tightened to secure part. DO NOT OVERTIGHTEN or damage may occur to plastic part.



MUSKOX

601 FIRST STREET NORTH | MENTOR, MINNESOTA 56736
WWW.MUSKOXMN.COM | 218.288.1905 | SERVICE@MUSKOXMN.COM